

Recombinant Human LYRM4 Protein, Myc/DDK-tagged, C13 and N15-labeled

Cat. No. LYRM4-1777H Lot. No. (See product label)

SPECIFICATION

Product Overview	LYRM4 MS Standard C13 and N15-labeled recombinant protein (NP_065141) with a C-terminal MYC/DDK tag, was expressed in HEK293 cells.
Species	Human
Source	HEK293
Description	The protein encoded by this gene is found in both mitochondria and the nucleus, where it binds cysteine desulfurase and helps free inorganic sulfur for Fe/S clusters. Disruption of this gene negatively impacts mitochondrial and cytosolic iron homeostasis.
Molecular Mass	10.7 kDa
AA Sequence	MAASSRAQVLALYRAMLRRESKRFSAYNYRITYAVRRIRDAFRENKNVKDPVEIQTLVN KAKRDLGVIRRQVHIGQLYSTDKLIENRDMPTTRTRTRPLEQKLISEEDLAANDILDYK DDDDKV
Purity	> 80% as determined by SDS-PAGE and Coomassie blue staining
Stability	Stable for 3 months from receipt of products under proper storage and handling conditions.
Storage	Store at -80 centigrade. Avoid repeated freeze-thaw cycles.

 Tel: 1-631-559-9269 1-516-512-3133

 Email: info@creative-biomart.com  Fax: 1-631-938-8127

 45-1 Ramsey Road, Shirley, NY 11967, USA

Concentration 50 µg/mL as determined by BCA

Storage Buffer 100 mM glycine, 25 mM Tris-HCl, pH 7.3.

GENE INFORMATION

Gene Name LYRM4 LYR motif containing 4 [Homo sapiens (human)]

Official Symbol LYRM4

Synonyms LYRM4; LYR motif containing 4; C6orf149, chromosome 6 open reading frame 149; LYR motif-containing protein 4; CGI 203; ISD11; homolog of yeast Isd11; mitochondrial matrix Nfs1 interacting protein; CGI-203; C6orf149;

Gene ID 57128

mRNA Refseq NM_020408

Protein Refseq NP_065141

MIM 613311

UniProt ID Q9HD34

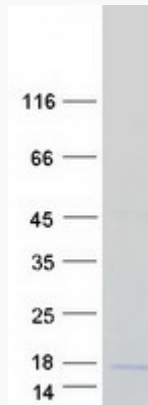
 Tel: 1-631-559-9269 1-516-512-3133

 Email: info@creative-biomart.com  Fax: 1-631-938-8127

 45-1 Ramsey Road, Shirley, NY 11967, USA



SDS-PAGE



Tel: 1-631-559-9269 1-516-512-3133

Email: info@creative-biomart.com Fax: 1-631-938-8127

45-1 Ramsey Road, Shirley, NY 11967, USA