

## Recombinant Human LYSMD3 Protein, GST-tagged

Cat. No. LYSMD3-4536H Lot. No. (See product label)

### SPECIFICATION

<b>Product Overview</b>	Human LYSMD3 full-length ORF ( AAH58027.1, 1 a.a. - 127 a.a.) recombinant protein with GST-tag at N-terminal.
<b>Species</b>	Human
<b>Source</b>	Wheat Germ
<b>Description</b>	LYSMD3 (LysM Domain Containing 3) is a Protein Coding gene. An important paralog of this gene is LYSMD4.
<b>Molecular Mass</b>	40.7 kDa
<b>AA Sequence</b>	MAGRHQNRSFPLPGVQSSGQVHAFGNCSDSILEEDADEVYELRSRGKEKVRRTS RDRLDDIIVLTKDIQEGDTLNAIALQYCCTVYQNSSKKVQFLDRNTLSSKRKTDFTSFI CSILFRTTGNFAS
<b>Applications</b>	Enzyme-linked Immunoabsorbent Assay Western Blot (Recombinant protein) Antibody Production Protein Array
<b>Notes</b>	Best use within three months from the date of receipt of this protein.
<b>Storage</b>	Store at -80 centigrade. Aliquot to avoid repeated freezing and thawing.

 Tel: 1-631-559-9269 1-516-512-3133

 Email: [info@creative-biomart.com](mailto:info@creative-biomart.com)  Fax: 1-631-938-8127

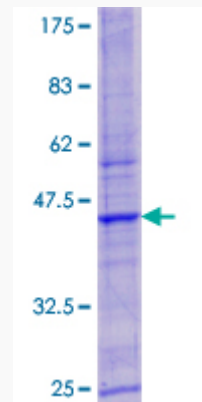
 45-1 Ramsey Road, Shirley, NY 11967, USA

**Storage Buffer** 50 mM Tris-HCl, 10 mM reduced Glutathione, pH=8.0 in the elution buffer.

## GENE INFORMATION

<b>Gene Name</b>	LYSMD3 LysM, putative peptidoglycan-binding, domain containing 3 [ Homo sapiens ]
<b>Official Symbol</b>	LYSMD3
<b>Synonyms</b>	LYSMD3; LysM, putative peptidoglycan-binding, domain containing 3;
<b>Gene ID</b>	116068
<b>mRNA Refseq</b>	NM_198273
<b>Protein Refseq</b>	NP_938014
<b>UniProt ID</b>	Q7Z3D4

### Quality Control Testing



12.5% SDS-PAGE Stained with Coomassie Blue

 Tel: 1-631-559-9269 1-516-512-3133

 Email: [info@creative-biomart.com](mailto:info@creative-biomart.com)  Fax: 1-631-938-8127

 45-1 Ramsey Road, Shirley, NY 11967, USA