

## Recombinant Human LYSDM4 Protein, GST-tagged

Cat. No. LYSDM4-4535H Lot. No. (See product label)

### SPECIFICATION

<b>Product Overview</b>	Human LYSDM4 full-length ORF ( NP_689662.2, 1 a.a. - 297 a.a.) recombinant protein with GST-tag at N-terminal.
<b>Species</b>	Human
<b>Source</b>	Wheat Germ
<b>Description</b>	LYSDM4 (LysM Domain Containing 4) is a Protein Coding gene. An important paralog of this gene is LYSDM3.
<b>Molecular Mass</b>	58.5 kDa
<b>AA Sequence</b>	MAVGTRGTLKKSLTVWFCGPGARSATRAVSTSLPRREQVTWCCCSGSWPRRTA STSWRCSMAANFCRHTVWLTEHGLKNEACPTKTGIDGVGFLVADIKKVNNFIREQD LYALKSVKIPVRNHGILMETHKELKPLLSPSSETTVTVELPEADRAGAGTGAQAGQL MGFFKGIDQDIERAVQSEIFLHESYCMDTSHQPLLAPPKTPMDGADCGIQWVNAV FIMLLIGIVLPVLYLVYFKIQASGETPNSLNTTVIPNGSMAMGTVPGQAPRLAVAVPAV TSADSQFSQTTQAGS
<b>Applications</b>	Enzyme-linked Immunoabsorbent Assay Western Blot (Recombinant protein) Antibody Production Protein Array
<b>Notes</b>	Best use within three months from the date of receipt of this protein.

 Tel: 1-631-559-9269 1-516-512-3133

 Email: [info@creative-biomart.com](mailto:info@creative-biomart.com)  Fax: 1-631-938-8127

 45-1 Ramsey Road, Shirley, NY 11967, USA

**Storage** Store at -80 centigrade. Aliquot to avoid repeated freezing and thawing.

**Storage Buffer** 50 mM Tris-HCl, 10 mM reduced Glutathione, pH=8.0 in the elution buffer.

## GENE INFORMATION

**Gene Name** LYSMD4 LysM, putative peptidoglycan-binding, domain containing 4 [ Homo sapiens ]

**Official Symbol** LYSMD4

**Synonyms** LYSMD4; LysM, putative peptidoglycan-binding, domain containing 4; lysM and putative peptidoglycan-binding domain-containing protein 4; FLJ33008; MGC99501;

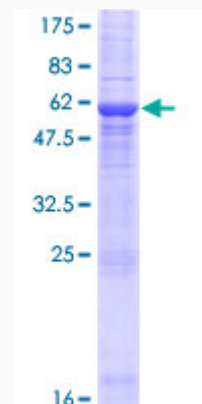
**Gene ID** 145748

**mRNA Refseq** NM\_152449

**Protein Refseq** NP\_689662

**UniProt ID** Q5XG99

**Quality Control Testing**



 Tel: 1-631-559-9269 1-516-512-3133

 Email: [info@creative-biomart.com](mailto:info@creative-biomart.com)  Fax: 1-631-938-8127

 45-1 Ramsey Road, Shirley, NY 11967, USA



12.5% SDS-PAGE Stained with Coomassie Blue

 Tel: 1-631-559-9269 1-516-512-3133

 Email: [info@creative-biomart.com](mailto:info@creative-biomart.com)  Fax: 1-631-938-8127

 45-1 Ramsey Road, Shirley, NY 11967, USA