

Recombinant Human LYVE1 protein, His-tagged

Cat. No. LYVE1-49H **Lot. No.** (See product label)

SPECIFICATION

Product Overview	Recombinant Human LYVE1 protein is produced by our Mammalian expression system and the target gene encoding Leu20-Thr238 is expressed with a 6His tag at the C-terminus.
Species	Human
Source	HEK293
ProteinLength	Leu20-Thr238
Form	Lyophilized from a 0.2 µm filtered solution of 20mM Tris-Citrate, 150mM NaCl, pH 7.0.
Molecular Mass	46 Kda
Endotoxin	Less than 0.1 ng/g (1 EU/g) as determined by LAL test.
Purity	Greater than 95% as determined by reducing SDS-PAGE.
Storage	Lyophilized protein should be stored at ≤ -20°C, stable for one year after receipt. Reconstituted protein solution can be stored at 2-8°C for 2-7 days. Aliquots of reconstituted samples are stable at ≤ -20°C for 3 months.
Reconstitution	Always centrifuge tubes before opening. Do not mix by vortex or pipetting. It is not recommended to reconstitute to a concentration less than 100µg/ml.

 Tel: 1-631-559-9269 1-516-512-3133

 Email: info@creative-biomart.com  Fax: 1-631-938-8127

 45-1 Ramsey Road, Shirley, NY 11967, USA

Dissolve the lyophilized protein in distilled water.
Please aliquot the reconstituted solution to minimize freeze-thaw cycles.

GENE INFORMATION

Gene Name LYVE1 lymphatic vessel endothelial hyaluronan receptor 1 [Homo sapiens]

Official Symbol LYVE1

Synonyms lymphatic vessel endothelial hyaluronan receptor 1; HAR; XLKD1; LYVE-1; CRSBP-1; LYVE1; hyaluronic acid receptor; extracellular link domain containing 1; extracellular link domain-containing 1; cell surface retention sequence binding protein-1; CRSBP1; Cell surface retention sequence-binding protein 1; Extracellular link domain-containing protein 1; Hyaluronic acid receptor

Gene ID 10894

mRNA Refseq NM_006691

Protein Refseq NP_006682

MIM 605702

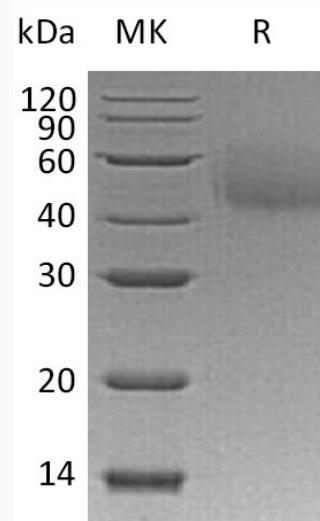
UniProt ID Q9Y5Y7

 Tel: 1-631-559-9269 1-516-512-3133

 Email: info@creative-biomart.com  Fax: 1-631-938-8127

 45-1 Ramsey Road, Shirley, NY 11967, USA

SDS-PAGE



 Tel: 1-631-559-9269 1-516-512-3133

 Email: info@creative-biomart.com  Fax: 1-631-938-8127

 45-1 Ramsey Road, Shirley, NY 11967, USA