

## Native Human Lysozyme(salivary)

**Cat. No.** LYZ-5316H    **Lot. No.** (See product label)

### SPECIFICATION

|                            |   |
|----------------------------|---|
| <b>Product Overview</b>    | Native human LYZ was expressed in Human blood. MW 17 kDa.   |
| <b>Species</b>             | Human   |
| <b>Source</b>              | Human Blood   |
| <b>Description</b>         | LYZ occurs in specific granules of human polymorphonuclear leukocytes and takes part in the antibacterial activity of the leukocytes. It hydrolyzes beta-1,4 links between N-acetylmuramic acid or 2-acetamido-2-deoxy-D-glucose residues in mucopolysaccharide, mucopolypeptide or chitin. |
| <b>Form</b>                | Liquid if 100 µg/vial; Lyophilized from 50 mM Na acetate, pH 6.0 with 100 mM NaCl if 1.0 mg/vial.   |
| <b>Molecule Weight</b>     | 17 kDa  |
| <b>Biological Activity</b> | 30,000 Sugar units per mg. One unit is defined as the amount of enzyme that digests powdered cells of <i>Micrococcus lysodeikticus</i> , causing a decrease in absorbency of 0.001 per minute at 37°C, pH 7.0.  |
| <b>Purity</b>              | ≥ 95% by SDS-PAGE.  |
| <b>Pathways</b>            | Amyloids; C-MYB transcription factor network; Salivary secretion  |

### GENE INFORMATION

 Tel: 1-631-559-9269    1-516-512-3133

 Email: [info@creative-biomart.com](mailto:info@creative-biomart.com)     Fax: 1-631-938-8127

 45-1 Ramsey Road, Shirley, NY 11967, USA



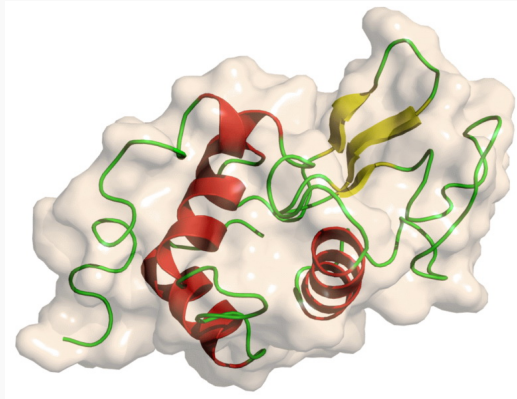
|                            |   |
|----------------------------|---|
| <b>Gene Name</b>           | LYZ lysozyme [ Homo sapiens]  |
| <b>Official Symbol</b>     | LYZ   |
| <b>Synonyms</b>            | LYZ; lysozyme; LZM; lysozyme C;renal amyloidosis; lysozyme (renal amyloidosis); OTTHUMP00000240861;OTTHUMP00000240877; 1,4-beta-N-acetylmuramidase C; EC 3.2.1.17 |
| <b>Gene ID</b>             | 4069  |
| <b>mRNA Refseq</b>         | NM_000239   |
| <b>Protein Refseq</b>      | NP_000230   |
| <b>MIM</b>                 | 153450  |
| <b>UniProt ID</b>          | P61626  |
| <b>Chromosome Location</b> | 12q15   |
| <b>Function</b>            | hydrolaseactivity, acting on glycosyl bonds; lysozyme activity  |

 Tel: 1-631-559-9269 1-516-512-3133

 Email: [info@creative-biomart.com](mailto:info@creative-biomart.com)  Fax: 1-631-938-8127

 45-1 Ramsey Road, Shirley, NY 11967, USA

PDBrendering based  
on 132I.



 Tel: 1-631-559-9269 1-516-512-3133

 Email: [info@creative-biomart.com](mailto:info@creative-biomart.com)  Fax: 1-631-938-8127

 45-1 Ramsey Road, Shirley, NY 11967, USA