

Recombinant Chicken LYZ protein, His-tagged

Cat. No. LYZ-5784C Lot. No. (See product label)

SPECIFICATION

Product Overview	Recombinant Chicken LYZ aa. (Lys19~Leu147) fused with N-terminal His tag was produced in E. coli cells.
Species	Chicken
Source	E.coli
ProteinLength	Lys19~Leu147
Form	Freeze-dried powder
Molecular Mass	18kDa as determined by SDS-PAGE reducing conditions.
Endotoxin	<1.0EU per 1g (determined by the LAL method)
Purity	>98%
Characteristic	The isoelectric point is 9.5.
Applications	SDS-PAGE; WB; ELISA; IP; CoIP; Purification; Amine Reactive Labeling.
Stability	The thermal stability is described by the loss rate. The loss rate was determined by accelerated thermal degradation test, that is, incubate the protein at 37°C for 48h, and no obvious degradation and precipitation were observed. The loss rate is less than 5% within the expiration date under appropriate storage condition.

 Tel: 1-631-559-9269 1-516-512-3133

 Email: info@creative-biomart.com  Fax: 1-631-938-8127

 45-1 Ramsey Road, Shirley, NY 11967, USA



Storage	Avoid repeated freeze/thaw cycles. Store at 2-8°C for one month. Aliquot and store at -80°C for 12 months.
Concentration	200µg/mL
Storage buffer	20mM Tris, 150mM NaCl, pH8.0, containing 1mM EDTA, 1mM DTT, 0.01% sarcosyl, 5%Trehalose and Proclin300.
Reconstitution	Reconstitute in 20mM Tris, 150mM NaCl (pH8.0) to a concentration of 0.1-1.0 mg/mL. Do not vortex.

GENE INFORMATION

Gene Name	LYZ lysozyme (renal amyloidosis) [Gallus gallus (chicken)]
Official Symbol	LYZ
Synonyms	LYZC; 1,4-beta-N-acetylmuramidase C; 4-beta-N-acetylmuramidase C; allergen Gal d IV; dystrophin; egg white lysozyme; lysozyme C
Gene ID	396218
mRNA Refseq	NM_205281.1
Protein Refseq	NP_990612.1
UniProt ID	P00698

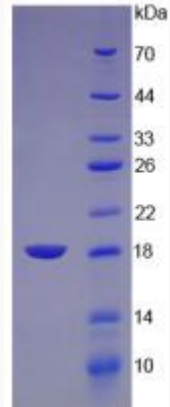
Tel: 1-631-559-9269 1-516-512-3133

Email: info@creative-biomart.com Fax: 1-631-938-8127

45-1 Ramsey Road, Shirley, NY 11967, USA



SDS-PAGE



Tel: 1-631-559-9269 1-516-512-3133

Email: info@creative-biomart.com Fax: 1-631-938-8127

45-1 Ramsey Road, Shirley, NY 11967, USA