

Recombinant Cattle LYZ1 protein, His-tagged

Cat. No. LYZ1-5783C Lot. No. (See product label)

SPECIFICATION

Product Overview	Recombinant Cattle LYZ1 aa. (Gly18~Leu147 (Accession # P04421)) fused with N-terminal His tag was produced in E. coli cells.
Species	Cattle
Source	E.coli
ProteinLength	Gly18~Leu147
Form	Freeze-dried powder
Molecular Mass	Predicted Molecular Mass: 16.1kDa
Endotoxin	<1.0EU per 1g (determined by the LAL method)
Purity	>95%
Characteristic	The isoelectric point is 6.8.
Applications	SDS-PAGE; WB; ELISA; IP.
Stability	The thermal stability is described by the loss rate. The loss rate was determined by accelerated thermal degradation test, that is, incubate the protein at 37°C for 48h, and no obvious degradation and precipitation were observed. The loss rate is less than 5% within the expiration date under appropriate storage condition.

 Tel: 1-631-559-9269 1-516-512-3133

 Email: info@creative-biomart.com  Fax: 1-631-938-8127

 45-1 Ramsey Road, Shirley, NY 11967, USA

Storage	Avoid repeated freeze/thaw cycles. Store at 2-8°C for one month. Aliquot and store at -80°C for 12 months.
Storage buffer	Supplied as lyophilized form in PBS, pH7.4, containing 5% trehalose, 0.01% sarcosyl.
Reconstitution	Reconstitute in sterile PBS, pH7.2-pH7.4.

GENE INFORMATION

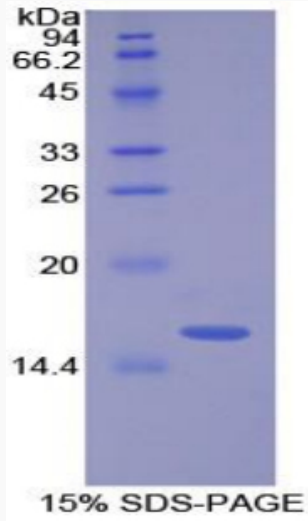
Gene Name	LYZ1 lysozyme (renal amyloidosis) [<i>Bos taurus</i> (cattle)]
Official Symbol	LYZ1
Synonyms	LYZ; LYSOZYME; 1,4-beta-N-acetylmuramidase C; lysozyme C-1
Gene ID	781349
mRNA Refseq	NM_001080339.1
Protein Refseq	NP_001073808.1
UniProt ID	P04421

 Tel: 1-631-559-9269 1-516-512-3133

 Email: info@creative-biomart.com  Fax: 1-631-938-8127

 45-1 Ramsey Road, Shirley, NY 11967, USA

SDS-PAGE



 Tel: 1-631-559-9269 1-516-512-3133

 Email: info@creative-biomart.com  Fax: 1-631-938-8127

 45-1 Ramsey Road, Shirley, NY 11967, USA