

Recombinant Human LYZL1 Protein (1-194 aa), His-SUMO-tagged

Cat. No. LYZL1-1042H **Lot. No.** (See product label)

SPECIFICATION

| | |
|-------------------------|---|
| Product Overview | Recombinant Human LYZL1 Protein (1-194 aa) is produced by E. coli expression system. This protein is fused with a 6xHis-SUMO tag at the N-terminal. Research Area: Cell Biology. Protein Description: Full Length of Isoform 2. |
| Species | Human |
| Source | E.coli |
| ProteinLength | 1-194 aa |
| Form | Tris-based buffer, 50% glycerol |
| Molecular Mass | 37.6 kDa |
| AA Sequence | MQDAPLSCLSP TKWSSVSSADSTEKSASGAGTRNLPFQFCLRQALRMKAAGILTLIG CLVTGAESKIYTRCKLAKIFSRAGLDNYWGFSLGNWICMAYYESGYNTTAQTVLDDG SIDYGIFQINSFAWCRRGKCLKENNHCHVAC SALITDDLTD AICARKIVKETQGMNYW QGWKKHCEGRDLSEWKKGCEVS |
| Purity | > 90% as determined by SDS-PAGE. |
| Notes | Repeated freezing and thawing is not recommended. Store working aliquots at 4 centigrade for up to one week. |

 Tel: 1-631-559-9269 1-516-512-3133

 Email: info@creative-biomart.com  Fax: 1-631-938-8127

 45-1 Ramsey Road, Shirley, NY 11967, USA

Storage

The shelf life is related to many factors, storage state, buffer ingredients, storage temperature and the stability of the protein itself. Generally, the shelf life of liquid form is 6 months at -20 centigrade/-80 centigrade. The shelf life of lyophilized form is 12 months at -20 centigrade/-80 centigrade.

Concentration

A hardcopy of COA with concentration instruction is sent along with the products.

GENE INFORMATION**Gene Name**

LYZL1 lysozyme-like 1 [Homo sapiens]

Official Symbol

LYZL1

Synonyms

LYZL1; lysozyme-like 1; LYC2; MGC33408; KAAG648; PRO1278; bA534G20.1;

Gene ID

84569

mRNA Refseq

NM_032517

Protein Refseq

NP_115906

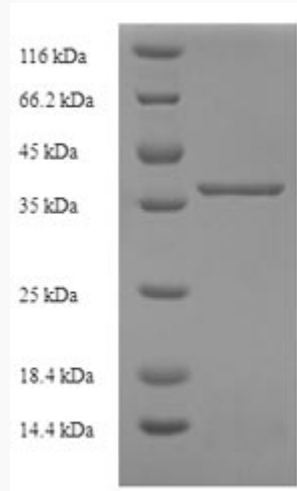
UniProt ID

Q6UWQ5

 Tel: 1-631-559-9269 1-516-512-3133

 Email: info@creative-biomart.com  Fax: 1-631-938-8127

 45-1 Ramsey Road, Shirley, NY 11967, USA



(Tris-Glycine gel) Discontinuous SDS-PAGE (reduced) with 5% enrichment gel and 15% separation gel.

 Tel: 1-631-559-9269 1-516-512-3133

 Email: info@creative-biomart.com  Fax: 1-631-938-8127

 45-1 Ramsey Road, Shirley, NY 11967, USA