

Recombinant Human LYZL1 Protein, GST-tagged

Cat. No. LYZL1-4531H Lot. No. (See product label)

SPECIFICATION

Product Overview	Human LYZL1 full-length ORF (AAH21730.1, 1 a.a. - 194 a.a.) recombinant protein with GST-tag at N-terminal.
Species	Human
Source	Wheat Germ
Description	LYZL1 (Lysozyme Like 1) is a Protein Coding gene. GO annotations related to this gene include lysozyme activity. An important paralog of this gene is LYZL2.
Molecular Mass	48 kDa
AA Sequence	MQDAPLSCLSPTRWSSVSSADSTEKASAGAGTRNLPFQFCLRQALRMKAAGILTLIG CLVTGAESKIYTRCKLAKIFSRAGLDNYWGFSLGNWICMAYYESGYNTTAPTVLDDG SIDYGIFQINSFAWCRRGKLGKLNHCHVACALITDDLTDIICARKIVKETQGMNYW QGWKKHCEGRDLSEWKKGCEVS
Applications	Enzyme-linked Immunoabsorbent Assay Western Blot (Recombinant protein) Antibody Production Protein Array
Notes	Best use within three months from the date of receipt of this protein.
Storage	Store at -80 centigrade. Aliquot to avoid repeated freezing and thawing.

 Tel: 1-631-559-9269 1-516-512-3133

 Email: info@creative-biomart.com  Fax: 1-631-938-8127

 45-1 Ramsey Road, Shirley, NY 11967, USA

Storage Buffer 50 mM Tris-HCl, 10 mM reduced Glutathione, pH=8.0 in the elution buffer.

GENE INFORMATION

Gene Name LYZL1 lysozyme-like 1 [Homo sapiens]

Official Symbol LYZL1

Synonyms LYZL1; lysozyme-like 1; lysozyme-like protein 1; LYC2; MGC33408; KAAG648; PRO1278; bA534G20.1;

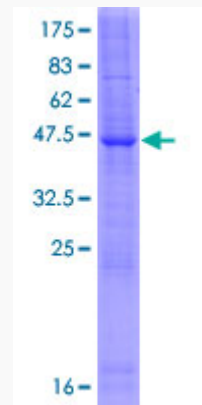
Gene ID 84569

mRNA Refseq NM_032517

Protein Refseq NP_115906

UniProt ID Q6UWQ5

Quality Control Testing



12.5% SDS-PAGE Stained with Coomassie Blue

 Tel: 1-631-559-9269 1-516-512-3133

 Email: info@creative-biomart.com  Fax: 1-631-938-8127

 45-1 Ramsey Road, Shirley, NY 11967, USA