

Recombinant Human LZTFL1 Protein, GST-tagged

Cat. No. LZTFL1-4526H Lot. No. (See product label)

SPECIFICATION

Product Overview	Human LZTFL1 full-length ORF (NP_065080.1, 1 a.a. - 299 a.a.) recombinant protein with GST-tag at N-terminal.
Species	Human
Source	Wheat Germ
Description	This gene encodes a ubiquitously expressed protein that localizes to the cytoplasm. This protein interacts with Bardet-Biedl Syndrome (BBS) proteins and, through its interaction with BBS protein complexes, regulates protein trafficking to the ciliary membrane. Nonsense mutations in this gene cause a form of Bardet-Biedl Syndrome; a ciliopathy characterized in part by polydactyly, obesity, cognitive impairment, hypogonadism, and kidney failure. This gene may also function as a tumor suppressor; possibly by interacting with E-cadherin and the actin cytoskeleton and thereby regulating the transition of epithelial cells to mesenchymal cells. Alternative splicing of this gene results in multiple transcript variants. [provided by RefSeq, Feb 2013]
Molecular Mass	61 kDa
AA Sequence	MAELGLNEHHQNEVINYMRFARSKRGLRLKTVDSQDLKESRLVEDTFTIDEVSEV LNGLQAVVHSEVESELINTAYTNVLLLRQLFAQAEKWYLKLTDISLENRELLEQVA EFEKAEITSSNKKPILDVTKPKLAPLNEGGTAELLNKEILRLQEENEKLSRLKTIEIQA TNALDEKSKLEKALQDLQLDQGNQKDFIKAQDLSNLENTVAALKSEFQKTLNDKTEN

 Tel: 1-631-559-9269 1-516-512-3133

 Email: info@creative-biomart.com  Fax: 1-631-938-8127

 45-1 Ramsey Road, Shirley, NY 11967, USA

QKSLEENLATAKHDLLRVQEQLHMAEKELEKKFQQTAAYRNMKEILTKKNDQIKDLR
KRLAQYEPED

Applications
Enzyme-linked Immunoabsorbent Assay
Western Blot (Recombinant protein)
Antibody Production
Protein Array

Notes Best use within three months from the date of receipt of this protein.

Storage Store at -80 centigrade. Aliquot to avoid repeated freezing and thawing.

Storage Buffer 50 mM Tris-HCl, 10 mM reduced Glutathione, pH=8.0 in the elution buffer.

GENE INFORMATION

Gene Name [LZTFL1 leucine zipper transcription factor-like 1 \[Homo sapiens \]](#)

Official Symbol [LZTFL1](#)

Synonyms LZTFL1; leucine zipper transcription factor-like 1; leucine zipper transcription factor-like protein 1; FLJ36386;

Gene ID [54585](#)

mRNA Refseq [NM_020347](#)

Protein Refseq [NP_065080](#)

MIM [606568](#)

 Tel: 1-631-559-9269 1-516-512-3133

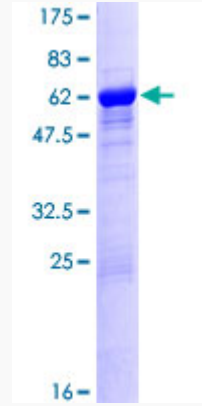
 Email: info@creative-biomart.com  Fax: 1-631-938-8127

 45-1 Ramsey Road, Shirley, NY 11967, USA

UniProt ID

Q9NQ48

Quality Control
Testing



12.5% SDS-PAGE Stained with Coomassie Blue

 Tel: 1-631-559-9269 1-516-512-3133

 Email: info@creative-biomart.com  Fax: 1-631-938-8127

 45-1 Ramsey Road, Shirley, NY 11967, USA