

Recombinant Human LZTFL1 Protein, Myc/DDK-tagged, C13 and N15-labeled

Cat. No. LZTFL1-4813H Lot. No. (See product label)

SPECIFICATION

Product Overview	LZTFL1 MS Standard C13 and N15-labeled recombinant protein (NP_065080) with a C-terminal MYC/DDK tag, was expressed in HEK293 cells.
Species	Human
Source	HEK293
Description	This gene encodes a ubiquitously expressed protein that localizes to the cytoplasm. This protein interacts with Bardet-Biedl Syndrome (BBS) proteins and, through its interaction with BBS protein complexes, regulates protein trafficking to the ciliary membrane. Nonsense mutations in this gene cause a form of Bardet-Biedl Syndrome; a ciliopathy characterized in part by polydactyly, obesity, cognitive impairment, hypogonadism, and kidney failure. This gene may also function as a tumor suppressor; possibly by interacting with E-cadherin and the actin cytoskeleton and thereby regulating the transition of epithelial cells to mesenchymal cells. Alternative splicing of this gene results in multiple transcript variants.
Molecular Mass	34.6 kDa
AA Sequence	MAELGLNEHHQNEVINYMRFARSKRGLRLKTVDSQFQDLKESRLVEDTFTIDEVSEV LNGLQAVVHSEVESELINTAYTNVLLLRQLFAQAEKWYLKLQTDISELENRELLEQVA EFEKAEITSSNKKPILDVTKPKLAPLNEGGTAELLNKEILRLQEENEKLSRLKTIEIQA TNALDEKSKLEKALQDLQLDQGNQKDFIKAQDLSNLENTVAALKSEFQKTLNDKTEN

 Tel: 1-631-559-9269 1-516-512-3133

 Email: info@creative-biomart.com  Fax: 1-631-938-8127

 45-1 Ramsey Road, Shirley, NY 11967, USA

QKSLEENLATAKHDLLRVQEQLHMAEKELEKKFQQTAAYRNMKEILTKKNDQIKDLR
KRLAQYEPEDTRTRPLEQKLISEEDLAANDILDYKDDDDKV

Purity > 80% as determined by SDS-PAGE and Coomassie blue staining

Stability Stable for 3 months from receipt of products under proper storage and handling conditions.

Storage Store at -80 centigrade. Avoid repeated freeze-thaw cycles.

Concentration 50 µg/mL as determined by BCA

Storage Buffer 100 mM glycine, 25 mM Tris-HCl, pH 7.3.

GENE INFORMATION

Gene Name LZTFL1 leucine zipper transcription factor-like 1 [Homo sapiens (human)]

Official Symbol LZTFL1

Synonyms LZTFL1; leucine zipper transcription factor-like 1; leucine zipper transcription factor-like protein 1; FLJ36386;

Gene ID 54585

mRNA Refseq NM_020347

Protein Refseq NP_065080

MIM 606568

 Tel: 1-631-559-9269 1-516-512-3133

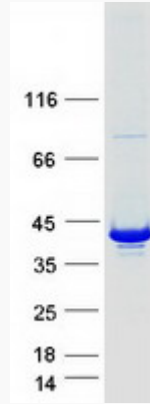
 Email: info@creative-biomart.com  Fax: 1-631-938-8127

 45-1 Ramsey Road, Shirley, NY 11967, USA

UniProt ID

Q9NQ48

SDS-PAGE



 Tel: 1-631-559-9269 1-516-512-3133

 Email: info@creative-biomart.com  Fax: 1-631-938-8127

 45-1 Ramsey Road, Shirley, NY 11967, USA