

## Recombinant Human LZTFL1 protein, GST-tagged

Cat. No. LZTFL1-6116H Lot. No. (See product label)

### SPECIFICATION

<b>Product Overview</b>	Recombinant Human LZTFL1 protein(1-299 aa), fused with N-terminal GST tag, was expressed in E. coli.
<b>Species</b>	Human
<b>Source</b>	E. coli
<b>ProteinLength</b>	1-299 aa
<b>Form</b>	The purified protein was lyophilized from sterile phosphate-buffered saline (PBS: 58 mM Na <sub>2</sub> HPO <sub>4</sub> , 17 mM NaH <sub>2</sub> PO <sub>4</sub> , 68 mM NaCl, pH 8.0). Prior to lyophilization, 5% (w/v) trehalose and 5% (w/v) mannitol were incorporated as cryoprotective excipients. The protein was eluted with a buffer containing 100 mM reduced glutathione (GSH).
<b>AASequence</b>	MAELGLNEHHQNEVINYMRFARSKRGLRLKTVDSFCQDLKESRLVEDTFTIDEVSEV LNLQAVVHSEVESELINTAYTNVLLLRQLFAQAEKWYLKLQTDISELENQELLEQVA EFEKAEITSSNKKPILDVTKPKLAPLNEGGTAELLNEEILRLQEENEKLSRLKTIEIQA TNALDEKSKLEKALQDLQLDQGNQKDFIKAQDLSNLENTVAALKSEFQKTLNDKKTEN QKSLEENLATAKHDLRLVREQLHMAEKELEKKFQQTAAYRNMKEILTKKNDQIKDLR KRLAQYEPED
<b>Purity</b>	85%, by SDS-PAGE.
<b>Storage</b>	Store at 2-8°C for 1-2 weeks. Aliquot and store at -20°C to -80°C for up to 3 months,

 Tel: 1-631-559-9269 1-516-512-3133

 Email: [info@creative-biomart.com](mailto:info@creative-biomart.com)  Fax: 1-631-938-8127

 45-1 Ramsey Road, Shirley, NY 11967, USA

reconstitution with sterile water and addition of an equal volume of glycerol. Avoid repeat freeze-thaw cycles.

**Reconstitution**

It is recommended that sterile water be added to the vial to prepare a stock solution of 0.25 ug/ul. Centrifuge the vial at 4°C before opening to recover the entire contents.

**GENE INFORMATION**

**Gene Name** LZTFL1 leucine zipper transcription factor-like 1 [ Homo sapiens ]

**Official Symbol** LZTFL1

**Synonyms** LZTFL1; leucine zipper transcription factor-like 1; leucine zipper transcription factor-like protein 1; FLJ36386;

**mRNA Refseq** NM\_020347

**Protein Refseq** NP\_065080

**MIM** 606568

**UniProt ID** Q9NQ48

**Gene ID** 54585

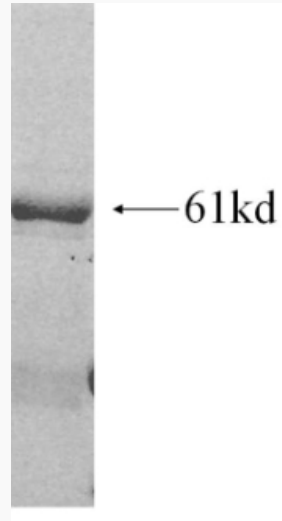
 Tel: 1-631-559-9269 1-516-512-3133

 Email: [info@creative-biomart.com](mailto:info@creative-biomart.com)  Fax: 1-631-938-8127

 45-1 Ramsey Road, Shirley, NY 11967, USA



SDS-PAGE



Tel: 1-631-559-9269 1-516-512-3133

Email: [info@creative-biomart.com](mailto:info@creative-biomart.com) Fax: 1-631-938-8127

45-1 Ramsey Road, Shirley, NY 11967, USA