

Recombinant Human LZTR1 Protein, GST-tagged

Cat. No. LZTR1-4523H Lot. No. (See product label)

SPECIFICATION

Product Overview	Human LZTR1 full-length ORF (CAK54544.1, 1 a.a. - 840 a.a.) recombinant protein with GST-tag at N-terminal.
Species	Human
Source	Wheat Germ
Description	This gene encodes a member of the BTB-kelch superfamily. Initially described as a putative transcriptional regulator based on weak homology to members of the basic leucine zipper-like family, the encoded protein subsequently has been shown to localize exclusively to the Golgi network where it may help stabilize the Gogli complex. Deletion of this gene may be associated with DiGeorge syndrome. [provided by RefSeq]
Molecular Mass	118.8 kDa
AA Sequence	MAGPGSTGGQIGAAALAGGARSKVAPSVDFDHSCSDSVEYLTLNFGPFETVHRWR RLPPCDEFVVGARRSKHTVVAYKDAIYVFGGDNGKTMLNDLLRFDVKDCSWCRAFTT GTPPAPRYHHSVAVYGSSMFVFGGYTGDIYSNSNLKNKNDLFEYKFATGQWTEWKI EGRLPVARSAHGATVYSDKLWIFAGYDGNARLNDMWTIGLQDRELTCWEEVAQSG EIPPSCCNFPVAVCRDKMFVFSGQSGAKITNNLFQFEFKDKTWTRIPTEHLLRGSP PPQRRYGHTMVAFDRHLYVFGGAADNTLPNELHCYDVDFQTWEVVQPSSDSEVG GAEVPERACASEEVPTLTYEERVGFKKSRDVFGLDFGTSSAKQPTQPASELPSGRL FHAAAVISDAMYIFGGTVDNNIRSGEMYRFQFSCYPKCTLHEDYGRLWESRQFCDV

 Tel: 1-631-559-9269 1-516-512-3133

 Email: info@creative-biomart.com  Fax: 1-631-938-8127

 45-1 Ramsey Road, Shirley, NY 11967, USA



EFVLGEKEECVQGHVAIVTARSRWLRRKITQARERLAQKLEQEAPVPREAPGVAA
 GGARPPLLHVAIREAEARPFVLMQFLYTDKIKYPRKGVHVEDVLLIMDVYKLALSFQL
 CRLEQLCRQYIEASVDLQNVLVVCEAARLQLSQLKEHCLNFVVKESHFNQVIMMKE
 FERLSSPLIVEIVRRKQQPPRTPLDQPVDIGTSLIQDMKAYLEGAGAEFCDITLLLDG
 HPRPAHKAILAARSSYFEAMFRSFMPEGDQVNI SIGEMVPSRQAFESMLRYIYYGEV
 NMPPEDSLYLFAAPYYYGFYNNRLQAYCKQNLEMNVTVQNVLQILEAADKTQALDM
 KRHCLHIIVHQFTKVSKLPTLRSLSQQLLLDIIDSLASHISDKQCAELGADI

Applications

Enzyme-linked Immunoabsorbent Assay
 Western Blot (Recombinant protein)
 Antibody Production
 Protein Array

Notes

Best use within three months from the date of receipt of this protein.

Storage

Store at -80 centigrade. Aliquot to avoid repeated freezing and thawing.

Storage Buffer

50 mM Tris-HCl, 10 mM reduced Glutathione, pH=8.0 in the elution buffer.

GENE INFORMATION

Gene Name

LZTR1 leucine zipper like transcription regulator 1 [Homo sapiens (human)]

Official Symbol

LZTR1

Synonyms

LZTR1; leucine zipper like transcription regulator 1; NS10; BTBD29; LZTR-1;
 SWNTS2; leucine-zipper-like transcriptional regulator 1

Gene ID

<https://www.ncbi.nlm.nih.gov/gene/?term=8216>

mRNA Refseq

NM_006767

Tel: 1-631-559-9269 1-516-512-3133

Email: info@creative-biomart.com Fax: 1-631-938-8127

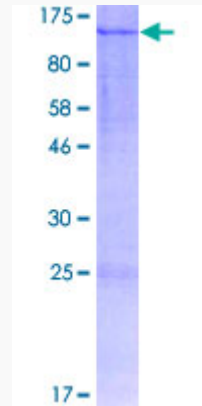
45-1 Ramsey Road, Shirley, NY 11967, USA

Protein Refseq NP_006758

MIM 600574

UniProt ID Q8N653

**Quality Control
Testing**



12.5% SDS-PAGE Stained with Coomassie Blue

 Tel: 1-631-559-9269 1-516-512-3133

 Email: info@creative-biomart.com  Fax: 1-631-938-8127

 45-1 Ramsey Road, Shirley, NY 11967, USA