

Recombinant Human LZTS1 Protein, GST-tagged

Cat. No. LZTS1-4522H Lot. No. (See product label)

SPECIFICATION

Product Overview	Human LZTS1 partial ORF (NP_066300, 514 a.a. - 596 a.a.) recombinant protein with GST-tag at N-terminal.
Species	Human
Source	Wheat Germ
Description	This gene encodes a tumor suppressor protein that is ubiquitously expressed in normal tissues. In uveal melanomas, expression of this protein is silenced in rapidly metastasizing and metastatic tumor cells but has normal expression in slowly metastasizing or nonmetastasizing tumor cells. This protein may have a role in cell-cycle control by interacting with the Cdk1/cyclinB1 complex. This gene is located on chromosomal region 8p22. Loss of heterozygosity (LOH) in the 8p arm is a common characteristic of many types of cancer. [provided by RefSeq, Nov 2009]
Molecular Mass	34.87 kDa
AA Sequence	ERQGHDMSSGFQHERLVWKEEKEKVIQYQKQLQQSYVAMYQRNQRLEKALQQL ARGDSAGEPLEVDLEGADIPYEDIATEI
Applications	Enzyme-linked Immunoabsorbent Assay Western Blot (Recombinant protein) Antibody Production Protein Array

 Tel: 1-631-559-9269 1-516-512-3133

 Email: info@creative-biomart.com  Fax: 1-631-938-8127

 45-1 Ramsey Road, Shirley, NY 11967, USA

Notes	Best use within three months from the date of receipt of this protein.
Storage	Store at -80 centigrade. Aliquot to avoid repeated freezing and thawing.
Storage Buffer	50 mM Tris-HCl, 10 mM reduced Glutathione, pH=8.0 in the elution buffer.

GENE INFORMATION

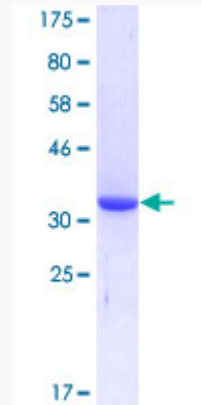
Gene Name	LZTS1 leucine zipper, putative tumor suppressor 1 [Homo sapiens]
Official Symbol	LZTS1
Synonyms	LZTS1; leucine zipper, putative tumor suppressor 1; F37/Esophageal cancer related gene coding leucine zipper motif; leucine zipper putative tumor suppressor 1; FEZ1; F37/Esophageal cancer-related gene-coding leucine-zipper motif; F37;
Gene ID	11178
mRNA Refseq	NM_021020
Protein Refseq	NP_066300
MIM	606551
UniProt ID	Q9Y250

 Tel: 1-631-559-9269 1-516-512-3133

 Email: info@creative-biomart.com  Fax: 1-631-938-8127

 45-1 Ramsey Road, Shirley, NY 11967, USA

**Quality Control
Testing**



12.5% SDS-PAGE Stained with Coomassie Blue

 Tel: 1-631-559-9269 1-516-512-3133

 Email: info@creative-biomart.com  Fax: 1-631-938-8127

 45-1 Ramsey Road, Shirley, NY 11967, USA