

## Recombinant Mouse Lag3 protein, His-tagged

Cat. No. Lag3-1083M Lot. No. (See product label)

### SPECIFICATION

<b>Product Overview</b>	Recombinant Mouse Lag3 protein(Q61790)(Ser23-Leu442), fused with C-terminal His tag, was expressed in HEK293.
<b>Species</b>	Mouse
<b>Source</b>	HEK293
<b>ProteinLength</b>	Ser23-Leu442
<b>Tag</b>	C-His
<b>Form</b>	Lyophilized from 0.22µm filtered solution in PBS (pH 7.4). Normally 5% trehalose is added as protectant before lyophilization.
<b>Bio-activity</b>	Immobilized Mouse LAG3, His Tag at 2ug/ml (100ul/Well) on the plate. Dose response curve for Mouse FGL1, hFc Tag with the EC50 of 0.18ug/ml determined by ELISA.
<b>Molecular Mass</b>	The protein has a predicted MW of 46.2 kDa. Due to glycosylation, the protein migrates to 65-70 kDa based on Tris-Bis PAGE result.
<b>Endotoxin</b>	Less than 1EU per µg by the LAL method.
<b>Purity</b>	> 95% as determined by Tris-Bis PAGE

 Tel: 1-631-559-9269 1-516-512-3133

 Email: [info@creative-biomart.com](mailto:info@creative-biomart.com)  Fax: 1-631-938-8127

 45-1 Ramsey Road, Shirley, NY 11967, USA

**Storage** Reconstituted protein stable at -80°C for 12 months, 4°C for 1 week. Use a manual defrost freezer and avoid repeated freeze-thaw cycles.

**Reconstitution** Centrifuge tubes before opening. Reconstituting to a concentration more than 100 µg/ml is recommended. Dissolve the lyophilized protein in distilled water.

## GENE INFORMATION

**Gene Name** [Lag3 lymphocyte-activation gene 3 \[ Mus musculus \]](#)

**Official Symbol** [Lag3](#)

**Synonyms** LAG3; lymphocyte-activation gene 3; lymphocyte activation gene 3 protein; Ly66; CD223; LAG-3;

**Gene ID** [16768](#)

**mRNA Refseq** [NM\\_008479](#)

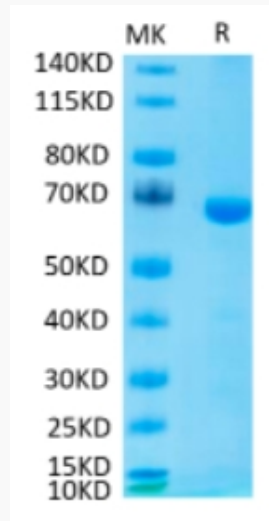
**Protein Refseq** [NP\\_032505](#)

 Tel: 1-631-559-9269 1-516-512-3133

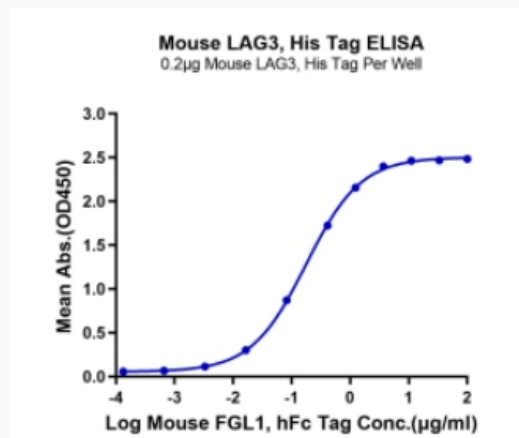
 Email: [info@creative-biomart.com](mailto:info@creative-biomart.com)  Fax: 1-631-938-8127

 45-1 Ramsey Road, Shirley, NY 11967, USA

**Tris-Bis PAGE**



**ELISA Data**



 Tel: 1-631-559-9269 1-516-512-3133

 Email: [info@creative-biomart.com](mailto:info@creative-biomart.com)  Fax: 1-631-938-8127

 45-1 Ramsey Road, Shirley, NY 11967, USA