

Recombinant Rat Lat2 protein, His & T7-tagged

Cat. No. Lat2-1495R **Lot. No.** (See product label)

SPECIFICATION

Product Overview	Recombinant Rat Lat2 aa. (Arg32~Asp192 (Accession # Q8CGL2)) fused with N-terminal His & T7 tag was produced in E. coli cells.
Species	Rat
Source	E.coli
ProteinLength	Arg32~Asp192
Description	Human homolog maps to the microdeletion region in Williams syndrome and may act as an adaptor for non T-cell immune response.
Form	Freeze-dried powder
Molecular Mass	Predicted Molecular Mass: 22.3kDa
Endotoxin	<1.0EU per 1ug (determined by the LAL method)
Purity	>95%
Applications	SDS-PAGE; WB; ELISA; IP.
Stability	The thermal stability is described by the loss rate. The loss rate was determined by accelerated thermal degradation test, that is, incubate the protein at 37°C for 48h, and no obvious degradation and precipitation were observed. The loss rate is less

 Tel: 1-631-559-9269 1-516-512-3133

 Email: info@creative-biomart.com  Fax: 1-631-938-8127

 45-1 Ramsey Road, Shirley, NY 11967, USA

than 5% within the expiration date under appropriate storage condition.

Storage

Avoid repeated freeze/thaw cycles. Store at 2-8°C for one month. Aliquot and store at -80°C for 12 months.

Storage buffer

Supplied as lyophilized form in PBS, pH7.4, containing 5% sucrose, 0.01% sarcosyl.

Reconstitution

Reconstitute in sterile PBS, pH7.2-pH7.4.

Isoelectric Point

6.1

GENE INFORMATION

Gene Name

[Lat2 linker for activation of T cells family, member 2 \[Rattus norvegicus \(Norway rat\) \]](#)

Official Symbol

[Lat2](#)

Synonyms

Lat2; linker for activation of T cells family, member 2; Ntal; Wbscr5; linker for activation of T-cells family member 2; LAT-2 like; Williams-Beuren syndrome chromosome region 5 homolog; Williams-Beuren syndrome chromosome region 5-like protein; linker for activation of B-cells; non-T cell activation linker

Gene ID

[317676](#)

mRNA Refseq

[NM_173840.1](#)

Protein Refseq

[NP_776212.1](#)

UniProt ID

[Q8CGL2](#)

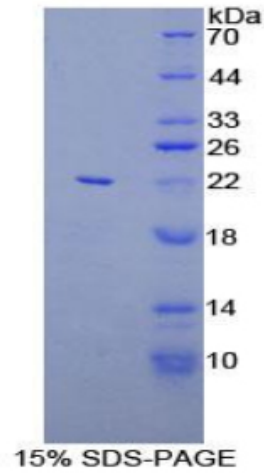
 Tel: 1-631-559-9269 1-516-512-3133

 Email: info@creative-biomart.com  Fax: 1-631-938-8127

 45-1 Ramsey Road, Shirley, NY 11967, USA



SDS-PAGE



Tel: 1-631-559-9269 1-516-512-3133

Email: info@creative-biomart.com Fax: 1-631-938-8127

45-1 Ramsey Road, Shirley, NY 11967, USA