

Recombinant Rat Lbp protein, His & GST-tagged

Cat. No. Lbp-6920R **Lot. No.** (See product label)

SPECIFICATION

| | |
|-------------------------|--|
| Product Overview | Recombinant Rat Lbp aa. (Asn27~Val481 (Accession # Q63313)) fused with N-terminal His & GST tag was produced in E. coli cells. |
| Species | Rat |
| Source | E.coli |
| ProteinLength | Asn27~Val481 |
| Description | Binds lipopolysaccharide on outer membrane of gram negative bacteria; involved in immune response. |
| Form | Freeze-dried powder |
| Molecular Mass | Predicted Molecular Mass: 81.7kDa |
| Endotoxin | <1.0EU per 1ug (determined by the LAL method) |
| Purity | >90% |
| Characteristic | The isoelectric point is 8.7. |
| Applications | SDS-PAGE; WB; ELISA; IP |
| Stability | The thermal stability is described by the loss rate. The loss rate was determined by |

 Tel: 1-631-559-9269 1-516-512-3133

 Email: info@creative-biomart.com  Fax: 1-631-938-8127

 45-1 Ramsey Road, Shirley, NY 11967, USA

accelerated thermal degradation test, that is, incubate the protein at 37°C for 48h, and no obvious degradation and precipitation were observed. The loss rate is less than 5% within the expiration date under appropriate storage condition.

Storage

Avoid repeated freeze/thaw cycles. Store at 2-8°C for one month. Aliquot and store at -80°C for 12 months.

Storage buffer

Supplied as lyophilized form in PBS, pH7.4, containing 5% trehalose, 0.01% sarcosyl.

Reconstitution

Reconstitute in sterile PBS, pH7.2-pH7.4.

GENE INFORMATION

Gene Name

[Lbp lipopolysaccharide binding protein \[Rattus norvegicus \(Norway rat\) \]](#)

Official Symbol

[Lbp](#)

Synonyms

Lbp; lipopolysaccharide binding protein; Bpifd2; lipopolysaccharide-binding protein; BPI fold containing family D, member 2

Gene ID

[29469](#)

mRNA Refseq

[NM_017208.2](#)

Protein Refseq

[NP_058904.2](#)

UniProt ID

[Q63313](#)

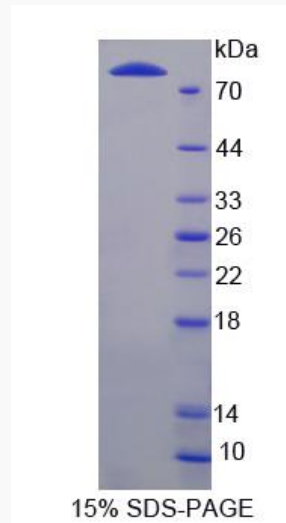
 Tel: 1-631-559-9269 1-516-512-3133

 Email: info@creative-biomart.com  Fax: 1-631-938-8127

 45-1 Ramsey Road, Shirley, NY 11967, USA



SDS-PAGE



Tel: 1-631-559-9269 1-516-512-3133

Email: info@creative-biomart.com Fax: 1-631-938-8127

45-1 Ramsey Road, Shirley, NY 11967, USA