

Recombinant Mouse Lcn2 Protein, His-tagged

Cat. No. Lcn2-1150M Lot. No. (See product label)

SPECIFICATION

Product Overview	Recombinant Mouse Lcn2 Protein (Gln21-Asn200) with His tag was expressed in 293F.
Species	Mouse
Source	HEK293
ProteinLength	Gln21-Asn200
Description	Enables iron ion binding activity. Involved in innate immune response; positive regulation of cold-induced thermogenesis; and siderophore transport. Acts upstream of or within extrinsic apoptotic signaling pathway in absence of ligand; response to bacterium; and response to virus. Located in extracellular space. Is expressed in several structures, including genitourinary system; gut; liver; lung; and spleen. Human ortholog(s) of this gene implicated in intrahepatic cholangiocarcinoma and urinary tract infection. Orthologous to human LCN2 (lipocalin 2).
Form	Freeze-dried powder
Molecular Mass	Predicted Molecular Mass: 22.5 kDa; Accurate Molecular Mass: 27 kDa
Purity	> 90%
Applications	Positive Control; Immunogen; SDS-PAGE; WB.

 Tel: 1-631-559-9269 1-516-512-3133

 Email: info@creative-biomart.com  Fax: 1-631-938-8127

 45-1 Ramsey Road, Shirley, NY 11967, USA

Stability	The thermal stability is described by the loss rate. The loss rate was determined by accelerated thermal degradation test, that is, incubate the protein at 37 centigrade for 48h, and no obvious degradation and precipitation were observed. The loss rate is less than 5% within the expiration date under appropriate storage condition.
Storage	Avoid repeated freeze/thaw cycles. Store at 2-8 centigrade for one month. Aliquot and store at -80 centigrade for 12 months.
Storage Buffer	20mM Tris, 150mM NaCl, pH8.0, containing 1mM EDTA, 1mM DTT, 0.01% SKL, 5% Trehalose and Proclin300.
Reconstitution	Reconstitute in 20mM Tris, 150mM NaCl (pH8.0) to a concentration of 0.1-1.0 mg/mL. Do not vortex.

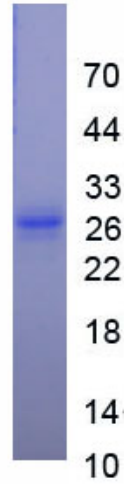
GENE INFORMATION

Gene Name	Lcn2 lipocalin 2 [Mus musculus (house mouse)]
Official Symbol	Lcn2
Synonyms	LCN2; lipocalin 2; p25; 24p3; MSFI; NGAL; neutrophil gelatinase-associated lipocalin; 25 kDa alpha-2-microglobulin-related subunit of MMP-9; migration-stimulating factor inhibitor; oncogene 24p3; siderocalin LCN2
Gene ID	16819
mRNA Refseq	NM_008491
Protein Refseq	NP_032517
UniProt ID	P11672

 Tel: 1-631-559-9269 1-516-512-3133

 Email: info@creative-biomart.com  Fax: 1-631-938-8127

 45-1 Ramsey Road, Shirley, NY 11967, USA



 Tel: 1-631-559-9269 1-516-512-3133

 Email: info@creative-biomart.com  Fax: 1-631-938-8127

 45-1 Ramsey Road, Shirley, NY 11967, USA