

Active Recombinant Mouse Ldha Protein, His-tagged

Cat. No. Ldha-7252M Lot. No. (See product label)

SPECIFICATION

Product Overview	Recombinant Mouse Ldha Protein with a His tag.
Species	Mouse
ProteinLength	1-332
Description	<p>The protein encoded by this gene catalyzes the conversion of L-lactate and NAD to pyruvate and NADH in the final step of anaerobic glycolysis. The protein is found predominantly in muscle tissue and belongs to the lactate dehydrogenase family. Mutations in this gene have been linked to hemolytic anemia and early postimplantation death in mice. Multiple transcript variants encoding different isoforms have been found for this gene. The mouse genome contains multiple pseudogenes of this gene.</p>
Form	Liquid
Bio-activity	Specific activity is > 250 units/mg, and is defined as the Amount of enzyme that convert 1.0 μmole of pyruvate to L-lactate and per minute at pH 7.5 at 37 centigrade.
Molecular Mass	37.5 kDa
AA Sequence	<p>MATLKDQLIVNLLKEEQAPQNKITVVGVGAVGMACAISILMKDLADELALVDVMDKLGEMMDLQHGSLFLKTPKIVSSKDYCVTANSKLVIIITAGARQQEGESRLNLVQRNVNIFKFIIPNIVKYSPHCKLLIVSNPVDILTIVAWKISGFKNRVIGSGCNLDSARFRYLMGERLGVHALSCHGWVLGEHGDSSVPVWVG VNVAGVSLKSLNPELGTADADKEQWKE</p>

 Tel: 1-631-559-9269 1-516-512-3133

 Email: info@creative-biomart.com  Fax: 1-631-938-8127

 45-1 Ramsey Road, Shirley, NY 11967, USA

VHKQVVDSAYEVIKLGKGYTSWAIGLSVADLAESIMKNLRRVHPISTMIKGLYGINEDVF
LSVPCILGQNGISDVVKVTLTPEEEARLKKSADTLWGIQKELQFLEHHHHHH

Endotoxin < 1.0 EU/μg of protein (determined by LAL method)

Purity > 95 % by SDS-PAGE

Stability Shelf life: one year from despatch.

Storage Store undiluted at 2-8 centigrade for one week or (in aliquots) at -20 to -80 centigrade for longer. Avoid repeated freezing and thawing.

Concentration 0.5 mg/mL (determined by absorbance at 280nm)

Storage Buffer Phosphate Buffered Saline (pH 7.4) containing 10 % glycerol.

GENE INFORMATION

Gene Name [Ldha lactate dehydrogenase A \[Mus musculus \(house mouse\) \]](#)

Official Symbol [Ldha](#)

Synonyms Ldha; lactate dehydrogenase A; I7; LDH; Ldh-; Ldh1; Ldhm; I7R2; L-lactate dehydrogenase A chain; LDH muscle subunit; LDH-M; M-LDH; lactate dehydrogenase 1, A chain; lactate dehydrogenase A4; EC 1.1.1.27

Gene ID [16828](#)

mRNA Refseq [NM_001136069](#)

Protein Refseq [NP_001129541](#)

 Tel: 1-631-559-9269 1-516-512-3133

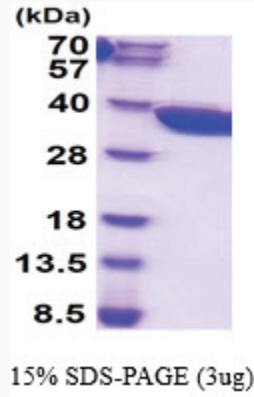
 Email: info@creative-biomart.com  Fax: 1-631-938-8127

 45-1 Ramsey Road, Shirley, NY 11967, USA

UniProt ID

Q564E2

SDS-PAGE



 Tel: 1-631-559-9269 1-516-512-3133

 Email: info@creative-biomart.com  Fax: 1-631-938-8127

 45-1 Ramsey Road, Shirley, NY 11967, USA