

Recombinant Rat Ldhc protein, His & T7-tagged

Cat. No. Ldhc-1139R **Lot. No.** (See product label)

SPECIFICATION

Product Overview	Recombinant Rat Ldhc aa. (Met1~Leu332 (Accession # P19629) fused with N-terminal His & T7 tag was produced in E. coli cells.
Species	Rat
Source	E.coli
ProteinLength	Met1~Leu332
Description	Member of the lactate dehydrogenase family, which catalyzes the conversion of lactate to pyruvate.
Form	Freeze-dried powder
Molecular Mass	Predicted Molecular Mass: 39.5kDa.
Endotoxin	<1.0EU per 1g (determined by the LAL method)
Purity	>95%
Characteristic	The isoelectric point is 8.1.
Applications	SDS-PAGE; WB; ELISA; IP.
Stability	The thermal stability is described by the loss rate of the target protein. The loss rate

 Tel: 1-631-559-9269 1-516-512-3133

 Email: info@creative-biomart.com  Fax: 1-631-938-8127

 45-1 Ramsey Road, Shirley, NY 11967, USA

was determined by accelerated thermal degradation test, that is, incubate the protein at 37°C for 48h, and no obvious degradation and precipitation were observed. (Referring from China Biological Products Standard, which was calculated by the Arrhenius equation.) The loss of this protein is less than 5% within the expiration date under appropriate storage condition.

Storage	Avoid repeated freeze/thaw cycles. Store at 2-8°C for one month. Aliquot and store at -80°C for 12 months.
Storage buffer	Supplied as lyophilized form in PBS, pH7.4, containing 5% trehalose, 0.01% sarcosyl.
Reconstitution	Reconstitute in sterile PBS, pH7.2-pH7.4.

GENE INFORMATION

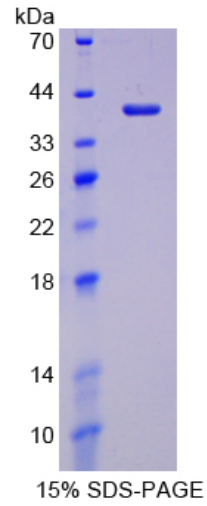
Gene Name	Ldhc lactate dehydrogenase C [<i>Rattus norvegicus</i> (Norway rat)]
Official Symbol	Ldhc
Synonyms	Ldhc; lactate dehydrogenase C; Ldh3; L-lactate dehydrogenase C chain; LDH testis subunit; LDH-C; LDH-X; lactate dehydrogenase 3, C chain, sperm specific; lactate dehydrogenase C variant 3
Gene ID	29634
mRNA Refseq	NM_017266.2
Protein Refseq	NP_058962.2
UniProt ID	P19629

 Tel: 1-631-559-9269 1-516-512-3133

 Email: info@creative-biomart.com  Fax: 1-631-938-8127

 45-1 Ramsey Road, Shirley, NY 11967, USA

SDS-PAGE



 Tel: 1-631-559-9269 1-516-512-3133

 Email: info@creative-biomart.com  Fax: 1-631-938-8127

 45-1 Ramsey Road, Shirley, NY 11967, USA