

## Recombinant Mouse Ldlr protein, His-tagged

Cat. No. Ldlr-645M Lot. No. (See product label)

### SPECIFICATION

<b>Product Overview</b>	Recombinant Mouse Ldlr (Ala22-Arg790) protein was fused to His-tag at C-terminus and expressed in human 293 cells (HEK293).
<b>Species</b>	Mouse
<b>Source</b>	HEK293
<b>ProteinLength</b>	Ala22-Arg790
<b>Description</b>	<p>Low-Density Lipoprotein (LDL) Receptor is also known as LDLR, FH, FHC, LDLCQ2, and is a mosaic protein of ~840 amino acids (after removal of signal peptide) that mediates the endocytosis of cholesterol-rich LDL. It is a cell-surface receptor that recognizes the apoprotein B100 which is embedded in the phospholipid outer layer of LDL particles. The receptor also recognizes the apoE protein found in chylomicron remnants and VLDL remnants (IDL). It belongs to the Low density lipoprotein receptor gene family. LDL receptor complexes are present in clathrin-coated pits (or buds) on the cell surface, which when bound to LDL-cholesterol via adaptin, are pinched off to form clathrin-coated vesicles inside the cell. This allows LDL-cholesterol to be bound and internalized in a process known as endocytosis and prevents the LDL just diffusing around the membrane surface. This occurs in all nucleated cells (not erythrocytes), but mainly in the liver which removes ~70% of LDL from the circulation. Synthesis of receptors in the cell is regulated by the level of free intracellular cholesterol; if it is in excess for the needs of the cell then the transcription of the receptor gene will be inhibited. LDL receptors are translated by ribosomes on the</p>

 Tel: 1-631-559-9269 1-516-512-3133

 Email: [info@creative-biomart.com](mailto:info@creative-biomart.com)  Fax: 1-631-938-8127

 45-1 Ramsey Road, Shirley, NY 11967, USA

endoplasmic reticulum and are modified by the Golgi apparatus before travelling in vesicles to the cell surface. LDL is directly involved in the development of atherosclerosis, due to accumulation of LDL-cholesterol in the blood. Atherosclerosis is the process responsible for the majority of cardiovascular diseases.

**Predicted N Terminal** Ala22

**Form** Lyophilized from 0.22 µm filtered solution in PBS, pH7.4, 10% trehalose.

**Molecular Mass** The protein has a calculated MW of 86.2 kDa. The protein migrates as 120 kDa under reducing (R) condition (SDS-PAGE) due to glycosylation.

**Endotoxin** Less than 1.0 EU per µg by the LAL method.

**Purity** >95% as determined by reduced SDS-PAGE.

**Storage** For long term storage, the product should be stored at lyophilized state at -20 centigrade or lower.

Please avoid repeated freeze-thaw cycles.

This product is stable after storage at:

-20 to -70 centigrade for 12 months in lyophilized state;

-70 centigrade for 3 months under sterile conditions after reconstitution.

**Reconstitution** It is recommended that sterile water be added to the vial to prepare a stock solution of 0.2 ug/ul. Centrifuge the vial at 4°C before opening to recover the entire contents.

## GENE INFORMATION

**Gene Name** Ldlr

**Official Symbol** Ldlr

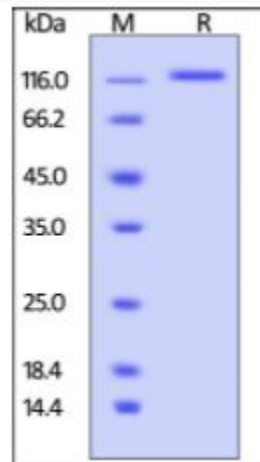
 Tel: 1-631-559-9269 1-516-512-3133

 Email: [info@creative-biomart.com](mailto:info@creative-biomart.com)  Fax: 1-631-938-8127

 45-1 Ramsey Road, Shirley, NY 11967, USA

<b>Synonyms</b>	LDLR; low density lipoprotein receptor; low-density lipoprotein receptor; LDL receptor; Hlb301
<b>Gene ID</b>	16835
<b>mRNA Refseq</b>	NM_001252658
<b>Protein Refseq</b>	NP_001239587
<b>UniProt ID</b>	P35951

**SDS-PAGE of Ldlr-645M**



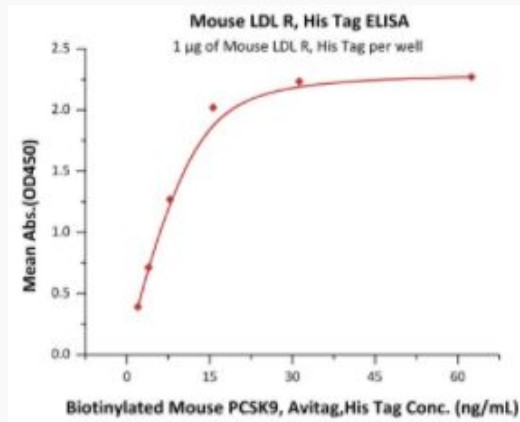
Mouse LDL R, His Tag on SDS-PAGE under reducing (R) condition. The gel was stained overnight with Coomassie Blue. The purity of the protein is greater than 95%.

Tel: 1-631-559-9269 1-516-512-3133

Email: [info@creative-biomart.com](mailto:info@creative-biomart.com) Fax: 1-631-938-8127

45-1 Ramsey Road, Shirley, NY 11967, USA

**Bioactivity-ELISA of  
Ldlr-645M**



Immobilized Mouse LDL R, His Tag at 10  $\mu$ g/mL (100  $\mu$ L/well) can bind Biotinylated Mouse PCSK9, Avitag, His Tag with a linear range of 2-16 ng/mL (QC tested).

 Tel: 1-631-559-9269 1-516-512-3133

 Email: [info@creative-biomart.com](mailto:info@creative-biomart.com)  Fax: 1-631-938-8127

 45-1 Ramsey Road, Shirley, NY 11967, USA