

## Recombinant Rat Lep

**Cat. No.** Lep-228R    **Lot. No.** (See product label)

### SPECIFICATION

<b>Species</b>	Rat
<b>Source</b>	E.coli
<b>Description</b>	Leptin (Greek leptos meaning thin) is a 16 kDa protein hormone that plays a key role in regulating energy intake and energy expenditure, including appetite and metabolism. It is one of the most important adipose derived hormones. The Lep is located on chromosome 7 in humans.
<b>Form</b>	Filtered (0, 4 µm) and lyophilized in 0.5 mg/mL in 0.002 mM NaHCO <sub>3</sub>
<b>Research topic</b>	Energy metabolism and body weight regulation
<b>Purity</b>	>95%
<b>Reconstitution</b>	Add deionized water to prepare a working stock solution of approximately 0.5 mg/mL and let the lyophilized pellet dissolve completely. Product is not sterile! Please filter the product by an appropriate sterile filter before using it in the cell culture.
<b>Applications</b>	ELISA; Western blotting
<b>Quality Control Test</b>	BCA to determine quantity of the protein; SDS PAGE to determine purity of the protein
<b>Sequences of amino</b>	VPIHKVQDDT KTLIKTIVTR INDISHTQSV SARQRVTGLD FIPGLHPILS

 Tel: 1-631-559-9269    1-516-512-3133

 Email: [info@creative-biomart.com](mailto:info@creative-biomart.com)     Fax: 1-631-938-8127

 45-1 Ramsey Road, Shirley, NY 11967, USA

**acids** LSKMDQTLAV YQQILTSLPS QNVLQIAHDL ENLRDLLHLL AFSKSCSLPQ  
TRGLQKPESL DGVLEASLYS TEVVALSRLQ GSLQDILQQL DLSPEC

**Storage** Store lyophilized protein at -20°C. Lyophilized protein remains stable until the expiry date when stored at -20°C. Aliquot reconstituted protein to avoid repeated freezing/thawing cycles and store at -80°C for long term storage. Reconstituted protein can be stored at 4°C for a limited period of time; it does not show any change after one week at 4°C.

## GENE INFORMATION

**Gene Name** [Lep leptin \[ Rattus norvegicus \]](#)

**Official Symbol** [Lep](#)

**Synonyms** Lep; leptin; OB; obese; obesity factor

**Gene ID** [25608](#)

**mRNA Refseq** [NM\\_013076](#)

**Protein Refseq** [NP\\_037208](#)

**UniProt ID** [O00253](#)

**Chromosome Location** 4q22

**Pathway** Adipocytokine signaling pathway; Adipogenesis; Cytokine-cytokine receptor interaction; Diabetes pathways; Incretin Synthesis; Integration of energy metabolism; Jak-STAT signaling pathway; Neuroactive ligand-receptor interaction; Regulation of

 Tel: 1-631-559-9269 1-516-512-3133

 Email: [info@creative-biomart.com](mailto:info@creative-biomart.com)  Fax: 1-631-938-8127

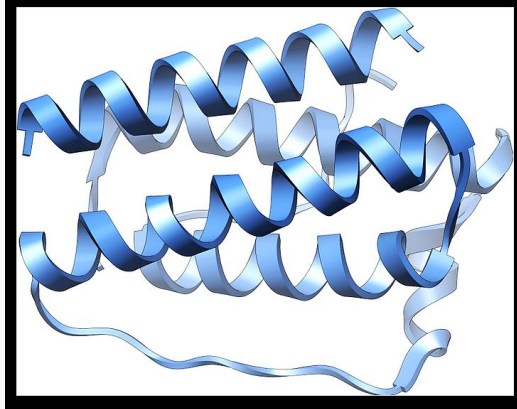
 45-1 Ramsey Road, Shirley, NY 11967, USA

Insulin Secretion; Synthesis

**Function**

cytokine activity; growth factor activity; hormone activity; peptide hormone receptor binding

**Leptin**



 Tel: 1-631-559-9269 1-516-512-3133

 Email: [info@creative-biomart.com](mailto:info@creative-biomart.com)  Fax: 1-631-938-8127

 45-1 Ramsey Road, Shirley, NY 11967, USA