

Recombinant Mouse Lepr protein, His & T7-tagged

Cat. No. Lepr-670M **Lot. No.** (See product label)

SPECIFICATION

Product Overview	Recombinant Mouse Lepr aa. (Leu22~Lys203 (Accession# P48356)) fused with N-terminal His & T7 tag was produced in E. coli cells.
Species	Mouse
Source	E.coli
ProteinLength	Leu22~Lys203
Form	Freeze-dried powder
Molecular Mass	Predicted Molecular Mass: 23.7kDa
Endotoxin	<1.0EU per 1g (determined by the LAL method)
Purity	>95%
Characteristic	The isoelectric point is 5.8.
Applications	SDS-PAGE; WB; ELISA; IP.
Stability	The thermal stability is described by the loss rate. The loss rate was determined by accelerated thermal degradation test, that is, incubate the protein at 37°C for 48h, and no obvious degradation and precipitation were observed. The loss rate is less than 5% within the expiration date under appropriate storage condition.

 Tel: 1-631-559-9269 1-516-512-3133

 Email: info@creative-biomart.com  Fax: 1-631-938-8127

 45-1 Ramsey Road, Shirley, NY 11967, USA

Storage	Avoid repeated freeze/thaw cycles. Store at 2-8°C for one month. Aliquot and store at -80°C for 12 months.
Storage buffer	Supplied as lyophilized form in PBS, pH 7.4, containing 5% sucrose, 0.01% sarcosyl.
Reconstitution	Reconstitute in sterile PBS, pH7.2-pH7.4.

GENE INFORMATION

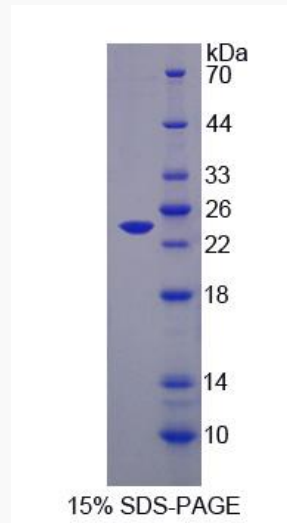
Gene Name	Lepr leptin receptor [Mus musculus (house mouse)]
Official Symbol	Lepr
Synonyms	db; Obr; obl; Leprb; Modb1; LEPROT; OB-RGRP; diabetes; obese-like; B219; LEP-R; OB receptor; leptin receptor gene-related protein; leptin receptor
Gene ID	16847
mRNA Refseq	NM_001122899.1
Protein Refseq	NP_001116371.1
UniProt ID	P48356

 Tel: 1-631-559-9269 1-516-512-3133

 Email: info@creative-biomart.com  Fax: 1-631-938-8127

 45-1 Ramsey Road, Shirley, NY 11967, USA

SDS-PAGE



 Tel: 1-631-559-9269 1-516-512-3133

 Email: info@creative-biomart.com  Fax: 1-631-938-8127

 45-1 Ramsey Road, Shirley, NY 11967, USA