

## Recombinant Mouse Lgals1 protein, hFc-tagged

Cat. No. Lgals1-4633M Lot. No. (See product label)

### SPECIFICATION

<b>Product Overview</b>	Recombinant Mouse Lgals1 protein(P16045)(Ala2-Glu135), fused with N-terminal hFc tag, was expressed in HEK293.
<b>Species</b>	Mouse
<b>Source</b>	HEK293
<b>ProteinLength</b>	Ala2-Glu135
<b>Tag</b>	N-hFc
<b>Form</b>	Supplied as 0.22µm filtered solution in PBS (pH 7.4).
<b>Molecular Mass</b>	The protein has a predicted MW of 42 kDa. Due to glycosylation, the protein migrates to 45-52 kDa based on Tris-Bis PAGE result.
<b>Endotoxin</b>	Less than 1EU per µg by the LAL method.
<b>Purity</b>	> 95% as determined by Tris-Bis PAGE;> 95% as determined by HPLC
<b>Storage</b>	Valid for 12 months from date of receipt when stored at -80°C. Recommend to aliquot the protein into smaller quantities for optimal storage. Please do not repeated freeze-thaw cycles.
<b>Reconstitution</b>	It is recommended that sterile water be added to the vial to prepare a stock solution of

 Tel: 1-631-559-9269 1-516-512-3133

 Email: [info@creative-biomart.com](mailto:info@creative-biomart.com)  Fax: 1-631-938-8127

 45-1 Ramsey Road, Shirley, NY 11967, USA

0.2 ug/ul. Centrifuge the vial at 4°C before opening to recover the entire contents.

## GENE INFORMATION

**Gene Name** [Lgals1 lectin, galactose binding, soluble 1 \[ Mus musculus \]](#)

**Official Symbol** [Lgals1](#)

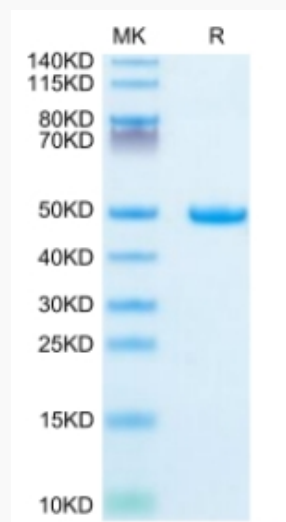
**Synonyms** LGALS1; lectin, galactose binding, soluble 1; galectin-1; galaptin; 14 kDa lectin; S-Lac lectin 1; lactose-binding lectin 1; beta-galactoside binding protein; lectin galactoside-binding soluble 1; beta-galactoside-binding lectin L-14-I; L14; Gal-1; Galbp; L-14.5; Lect14; AA410090;

**Gene ID** [16852](#)

**mRNA Refseq** [NM\\_008495](#)

**Protein Refseq** [NP\\_032521](#)

### Tris-Bis PAGE



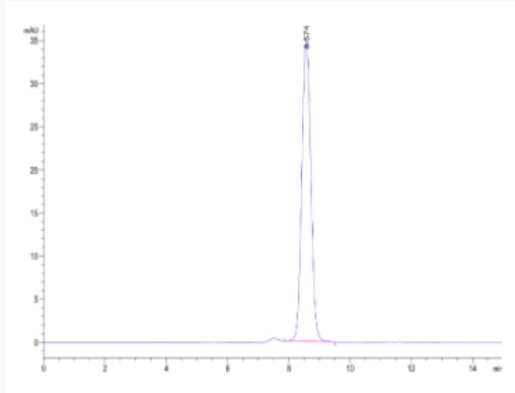
Tel: 1-631-559-9269 1-516-512-3133

Email: [info@creative-biomart.com](mailto:info@creative-biomart.com) Fax: 1-631-938-8127

45-1 Ramsey Road, Shirley, NY 11967, USA



SEC-HPLC



Tel: 1-631-559-9269 1-516-512-3133

Email: [info@creative-biomart.com](mailto:info@creative-biomart.com) Fax: 1-631-938-8127

45-1 Ramsey Road, Shirley, NY 11967, USA