

Recombinant Mouse Lgals1 protein, His&Myc-tagged

Cat. No. Lgals1-6744M Lot. No. (See product label)

SPECIFICATION

Product Overview	Recombinant Mouse Lgals1 protein(P16045)(2-135aa), fused with N-terminal His tag and C-terminal Myc tag, was expressed in E.coli.
Species	Mouse
Source	E.coli
ProteinLength	2-135a.a.
Tag	His&Myc
Form	If the delivery form is liquid, the default storage buffer is Tris/PBS-based buffer, 5%-50% glycerol. If the delivery form is lyophilized powder, the buffer before lyophilization is Tris/PBS-based buffer, 6% Trehalose, pH 8.0.
Molecular Mass	22.2 kDa
Purity	Greater than 90% as determined by SDS-PAGE.
Storage	Store at -20°C/-80°C upon receipt, aliquoting is necessary for mutiple use. Avoid repeated freeze-thaw cycles.
Reconstitution	We recommend that this vial be briefly centrifuged prior to opening to bring the contents to the bottom. Please reconstitute protein in deionized sterile water to a concentration of 0.1-1.0 mg/mL.We recommend to add 5-50% of glycerol (final

 Tel: 1-631-559-9269 1-516-512-3133

 Email: info@creative-biomart.com  Fax: 1-631-938-8127

 45-1 Ramsey Road, Shirley, NY 11967, USA

concentration) and aliquot for long-term storage at -20°C/-80°C.

AA Sequence

ACGLVASNLNLKPGECLKVRGEVASDAKSFVLNLGKDSNNLCLHFNPRFNAHGDN
TIVCNTKEDGTWGTGTEHREPAFPFQPGSITEVCITFDQADLTIKLPDGHEFKFPNRLNM
EAINYMAADGDFKIKCVAFE

GENE INFORMATION

Gene Name

[Lgals1 lectin, galactose binding, soluble 1 \[Mus musculus \]](#)

Official Symbol

[Lgals1](#)

Synonyms

LGALS1; lectin, galactose binding, soluble 1; galectin-1; galaptin; 14 kDa lectin; S-Lac lectin 1; lactose-binding lectin 1; beta-galactoside binding protein; lectin galactoside-binding soluble 1; beta-galactoside-binding lectin L-14-I; L14; Gal-1; Galbp; L-14.5; Lect14; AA410090;

Gene ID

[16852](#)

mRNA Refseq

[NM_008495](#)

Protein Refseq

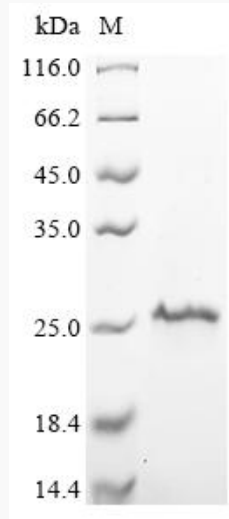
[NP_032521](#)

 Tel: 1-631-559-9269 1-516-512-3133

 Email: info@creative-biomart.com  Fax: 1-631-938-8127

 45-1 Ramsey Road, Shirley, NY 11967, USA

SDS-PAGE



 Tel: 1-631-559-9269 1-516-512-3133

 Email: info@creative-biomart.com  Fax: 1-631-938-8127

 45-1 Ramsey Road, Shirley, NY 11967, USA