

Active Recombinant Rat Lgals2 protein, His-tagged

Cat. No. Lgals2-407R **Lot. No.** (See product label)

SPECIFICATION

Product Overview	Active Recombinant Rat Lgals2 protein(Q9Z144)(1~130 aa), fused with N-terminal His tag, was expressed in E.coli.
Species	Rat
Source	E.coli
ProteinLength	1-130 aa
Form	Lyophilized from sterile PBS, pH7.4, containing 0.01% SKL, 1mM DTT, 5% Trehalose and Proclin300.
Bio-activity	<p>Galectin 2 (GAL2) belongs to the proto type group and consists of two homologous carbohydrate recognition domains (CRDs) resulting in multiple sugar binding sites. The expression of gal-2 has been shown to be involved in processes of angiogenesis and inflammation but was not analyzed before in preeclamptic (PE) placentas. It also can agglutinate red blood. In this case, chose rabbit erythrocyte (RaE) to assay its ability of agglutination. A general procedure for hemagglutination assay (or haemagglutination assay; HA) is as follows, two-fold dilute the recombinant rat GAL2 with 0.9% sodium chloride injection, add 50µL a serial dilution of GAL2 to each well of a U or V-bottom shaped 96-well microtiter plate. The final well serves as a negative control without GAL2, replace with 50µL 0.9% sodium chloride injection. Then add 50µL 1% rabbit erythrocyte to each well and mixed gently. The plate is incubated for 3 hours at room temperature. The results are shown. It was obvious that the minimal</p>

 Tel: 1-631-559-9269 1-516-512-3133

 Email: info@creative-biomart.com  Fax: 1-631-938-8127

 45-1 Ramsey Road, Shirley, NY 11967, USA



effective concentration of GAL2 is 1.25µg/ml.

Molecular Mass 18.4kDa

Endotoxin <1.0EU per 1µg (determined by the LAL method).

Purity > 97% as determined by SDS-PAGE.

Storage Avoid repeated freeze/thaw cycles. Store at -20°C for 12 months. Aliquot and store at -80°C for 12 months.

Reconstitution Reconstitute in 10mM PBS (pH7.4) to a concentration of 0.1-1.0 mg/mL. Do not vortex.

GENE INFORMATION

Gene Name Lgals2 lectin, galactoside-binding, soluble, 2 [Rattus norvegicus]

Official Symbol Lgals2

Synonyms LGALS2; lectin, galactoside-binding, soluble, 2; galectin-2; gal-2; lectin galactoside-binding soluble 2 (galectin 2); lectin, galactoside-binding, soluble, 2 (galectin 2);

Gene ID 171134

mRNA Refseq NM_133599

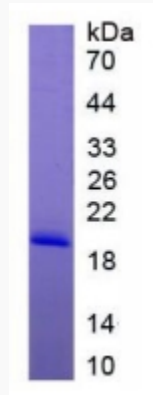
Protein Refseq NP_598283

Tel: 1-631-559-9269 1-516-512-3133

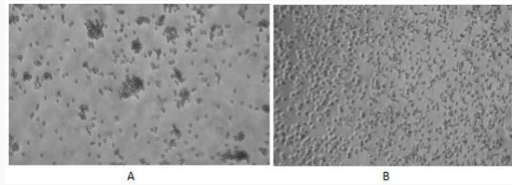
Email: info@creative-biomart.com Fax: 1-631-938-8127

45-1 Ramsey Road, Shirley, NY 11967, USA

SDS-PAGE



Activity



 Tel: 1-631-559-9269 1-516-512-3133

 Email: info@creative-biomart.com  Fax: 1-631-938-8127

 45-1 Ramsey Road, Shirley, NY 11967, USA