

Active Recombinant Rat Lgals3 protein, His-tagged

Cat. No. Lgals3-410R Lot. No. (See product label)

SPECIFICATION

Product Overview Active Recombinant Rat Lgals3 protein(P08699)(1~262 aa), fused with N-terminal His tag, was expressed in E.coli.

Species Rat

Source E.coli

ProteinLength 1-262 aa

Form Lyophilized from sterile 20mM Tris, 150mM NaCl, pH8.0, containing 1mM EDTA, 1mM DTT, 0.01% SKL, 5% Trehalose and Proclin300.

Bio-activity Galectin 3 (GAL3) is a member of the lectin family, of which 14 mammalian galectins have been identified. It is also a member of the beta-galactoside-binding protein family that plays an important role in cell-cell adhesion, cell-matrix interactions, macrophage activation, angiogenesis, metastasis, apoptosis. The protein also has been demonstrated to be involved in cancer, inflammation and fibrosis, heart disease, and stroke. GAL3 is expressed in the nucleus, cytoplasm, mitochondrion, cell surface, and extracellular space. It also can agglutinate red blood. In this case, we choose rabbit erythrocyte (RaE) to assay its ability of agglutination. A general procedure for hemagglutination assay (HA) is as follows, two-fold dilute the recombinant rat GAL3 with 0.01M PBS (pH7.4), add 50µL a serial dilution of GAL3 to each well of a U or V-bottom shaped 96-well microtiter plate. The final well serves as a negative control with no GAL3, replace with 50µL 0.01M PBS. Then add 50µL 1% RaE to each well

 Tel: 1-631-559-9269 1-516-512-3133

 Email: info@creative-biomart.com  Fax: 1-631-938-8127

 45-1 Ramsey Road, Shirley, NY 11967, USA

and mixed gently. The plate is incubated for 1-2 hours at room temperature. The results are shown. The minimal effective concentration of GAL3 is 2.5µg/mL. (A) 1% RaE treated with 2.5µg/mL GAL3 for 2h; (B) Negative control without GAL3.

Molecular Mass	28.5kDa
Endotoxin	<1.0EU per 1µg (determined by the LAL method).
Purity	> 90% as determined by SDS-PAGE.
Storage	Avoid repeated freeze/thaw cycles. Store at -20°C for 12 months. Aliquot and store at -80°C for 12 months.
Reconstitution	Reconstitute in 20mM Tris, 150mM NaCl (pH8.0) to a concentration of 0.1-1.0 mg/mL. Do not vortex.

GENE INFORMATION

Gene Name	Lgals3 lectin, galactoside-binding, soluble, 3 [Rattus norvegicus]
Official Symbol	Lgals3
Synonyms	LGALS3; lectin, galactoside-binding, soluble, 3; galectin-3; CBP 35; lectin L-29; 35 kDa lectin; mac-2 antigen; IgE binding protein; IgE-binding protein; laminin-binding protein; galactose-specific lectin 3; carbohydrate-binding protein 35; lectin, galactose binding, soluble 3; gal-3; MGC105387;
Gene ID	83781
mRNA Refseq	NM_031832

 Tel: 1-631-559-9269 1-516-512-3133

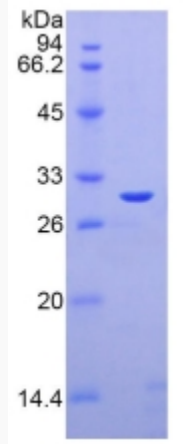
 Email: info@creative-biomart.com  Fax: 1-631-938-8127

 45-1 Ramsey Road, Shirley, NY 11967, USA

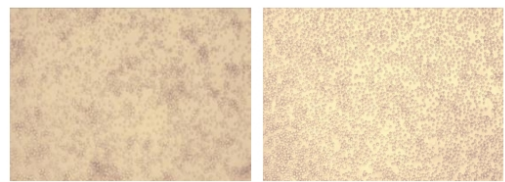
Protein Refseq

NP_114020

SDS-PAGE



Activity



 Tel: 1-631-559-9269 1-516-512-3133

 Email: info@creative-biomart.com  Fax: 1-631-938-8127

 45-1 Ramsey Road, Shirley, NY 11967, USA