

## Recombinant Mouse Lhb Protein, His&GST-tagged

Cat. No. Lhb-1737M Lot. No. (See product label)

### SPECIFICATION

<b>Product Overview</b>	Recombinant Mouse Lhb Protein (Ser19-Leu139) with N-His&GST tag was expressed in E. coli.
<b>Species</b>	Mouse
<b>Source</b>	E.coli
<b>ProteinLength</b>	Ser19-Leu139
<b>Description</b>	Predicted to enable hormone activity. Acts upstream of or within luteinizing hormone signaling pathway involved in ovarian follicle development. Located in cytoplasm. Is expressed in alimentary system; brain; genitourinary system; and heart. Human ortholog(s) of this gene implicated in hypogonadotropic hypogonadism 23 with or without anosmia. Orthologous to several human genes including LHB (luteinizing hormone subunit beta).
<b>Form</b>	Freeze-dried powder
<b>Molecular Mass</b>	Predicted Molecular Mass: 43.1 kDa Accurate Molecular Mass: 43 kDa
<b>Purity</b>	> 90%
<b>Applications</b>	Positive Control; Immunogen; SDS-PAGE; WB.

 Tel: 1-631-559-9269 1-516-512-3133

 Email: [info@creative-biomart.com](mailto:info@creative-biomart.com)  Fax: 1-631-938-8127

 45-1 Ramsey Road, Shirley, NY 11967, USA

<b>Stability</b>	The thermal stability is described by the loss rate. The loss rate was determined by accelerated thermal degradation test, that is, incubate the protein at 37 centigrade for 48h, and no obvious degradation and precipitation were observed. The loss rate is less than 5% within the expiration date under appropriate storage condition.
<b>Storage</b>	Avoid repeated freeze/thaw cycles. Store at 2-8 centigrade for one month. Aliquot and store at -80 centigrade for 12 months.
<b>Storage Buffer</b>	20mM Tris, 150mM NaCl, pH8.0, containing 1mM EDTA, 1mM DTT, 0.01% SKL, 5% Trehalose and Proclin300.
<b>Reconstitution</b>	Reconstitute in 20mM Tris, 150mM NaCl (pH8.0) to a concentration of 0.1-1.0 mg/mL. Do not vortex.

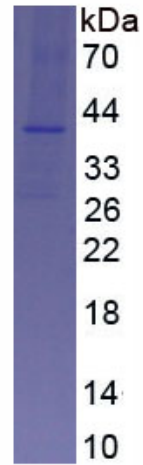
## GENE INFORMATION

<b>Gene Name</b>	<a href="#">Lhb luteinizing hormone beta [ Mus musculus (house mouse) ]</a>
<b>Official Symbol</b>	<a href="#">Lhb</a>
<b>Synonyms</b>	LHB; luteinizing hormone beta; lutropin subunit beta; leutropin; lutropin beta chain; luteinizing hormone subunit beta; LH; LH-B; LSH-B; LSH-beta;
<b>Gene ID</b>	<a href="#">16866</a>
<b>mRNA Refseq</b>	<a href="#">NM_008497</a>
<b>Protein Refseq</b>	<a href="#">NP_032523</a>
<b>UniProt ID</b>	<a href="#">G3X9G6</a>

 Tel: 1-631-559-9269 1-516-512-3133

 Email: [info@creative-biomart.com](mailto:info@creative-biomart.com)  Fax: 1-631-938-8127

 45-1 Ramsey Road, Shirley, NY 11967, USA



Tel: 1-631-559-9269 1-516-512-3133

Email: [info@creative-biomart.com](mailto:info@creative-biomart.com) Fax: 1-631-938-8127

45-1 Ramsey Road, Shirley, NY 11967, USA