

## Recombinant Rat Lhb protein, His-tagged

Cat. No. Lhb-7910R Lot. No. (See product label)

### SPECIFICATION

<b>Product Overview</b>	Recombinant Rat Lhb aa. (Ser21~Phe141 (Accession # P01230)) fused with N-terminal His tag was produced in E. coli cells.
<b>Species</b>	Rat
<b>Source</b>	E.coli
<b>ProteinLength</b>	Ser21~Phe141
<b>Description</b>	Subunit of luteinizing hormone; involved in spermatogenesis and oogenesis.
<b>Form</b>	Freeze-dried powder
<b>Molecular Mass</b>	Predicted Molecular Mass: 14.4kDa.
<b>Endotoxin</b>	<1.0EU per 1ug (determined by the LAL method)
<b>Purity</b>	>95%
<b>Characteristic</b>	The isoelectric point is 8.3.
<b>Applications</b>	SDS-PAGE; WB; ELISA; IP.
<b>Stability</b>	The thermal stability is described by the loss rate of the target protein. The loss rate was determined by accelerated thermal degradation test, that is, incubate the protein

 Tel: 1-631-559-9269 1-516-512-3133

 Email: [info@creative-biomart.com](mailto:info@creative-biomart.com)  Fax: 1-631-938-8127

 45-1 Ramsey Road, Shirley, NY 11967, USA

at 37°C for 48h, and no obvious degradation and precipitation were observed. (Referring from China Biological Products Standard, which was calculated by the Arrhenius equation.) The loss of this protein is less than 5% within the expiration date under appropriate storage condition.

<b>Storage</b>	Avoid repeated freeze/thaw cycles. Store at 2-8°C for one month. Aliquot and store at -80°C for 12 months.
<b>Storage Buffer</b>	Supplied as lyophilized form in PBS, pH7.4, containing 5% trehalose, 0.01% sarcosyl.
<b>Reconstitution</b>	Reconstitute in sterile PBS, pH7.2-pH7.4.

## GENE INFORMATION

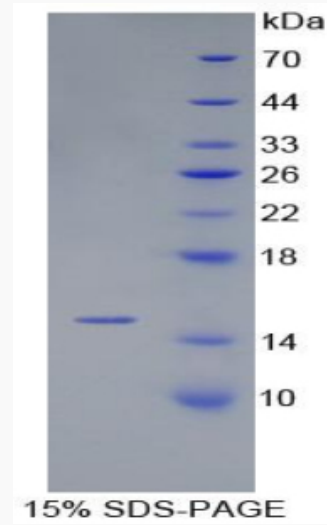
<b>Gene Name</b>	Lhb luteinizing hormone beta polypeptide [ <i>Rattus norvegicus</i> (Norway rat) ]
<b>Official Symbol</b>	Lhb
<b>Synonyms</b>	Lhb; luteinizing hormone beta polypeptide; lutropin subunit beta; LH-B; LSH-B; LSH-beta; Luteinizing hormone (lutropin) subunit beta; luteinizing hormone beta subunit; luteinizing hormone subunit beta; lutropin beta chain
<b>Gene ID</b>	25329
<b>mRNA Refseq</b>	NM_001033975.1
<b>Protein Refseq</b>	NP_001029147.1
<b>UniProt ID</b>	P01230

 Tel: 1-631-559-9269 1-516-512-3133

 Email: [info@creative-biomart.com](mailto:info@creative-biomart.com)  Fax: 1-631-938-8127

 45-1 Ramsey Road, Shirley, NY 11967, USA

SDS-PAGE



 Tel: 1-631-559-9269 1-516-512-3133

 Email: [info@creative-biomart.com](mailto:info@creative-biomart.com)  Fax: 1-631-938-8127

 45-1 Ramsey Road, Shirley, NY 11967, USA