

Active Recombinant Rat Lif protein, His-tagged

Cat. No. Lif-1739R Lot. No. (See product label)

SPECIFICATION

Product Overview	Active Recombinant Rat Lif protein(P17777)(25~202 aa), fused with N-terminal His tag, was expressed in E.coli.
Species	Rat
Source	E.coli
ProteinLength	25-202 aa
Form	Lyophilized from sterile PBS, pH7.4, containing 0.01% SKL, 1mM DTT, 5% Trehalose and Proclin300.
Bio-activity	Leukemia inhibitory factor (LIF), is an interleukin 6 class cytokine that affects cell growth by inhibiting differentiation. LIF as a cytokine also has another function including: the growth promotion and cell differentiation of different types of target cells, influence on bone metabolism, cachexia, neural development, embryogenesis and inflammation. To evaluate the activity of recombinant rat LIF, the K562 cells were seeded into triplicate wells of 96-well plates at a density of 5,000 cells/well with 5% serum standard 1640 which contains various concentrations of recombinant rat LIF. After incubated for 72h, cells were observed by inverted microscope and cell proliferation was measured by Cell Counting Kit-8 (CCK-8). Briefly, 10 μ l of CCK-8 solution was added to each well of the plate, then the absorbance at 450 nm was measured using a microplate reader after incubating the plate for 2-4 hours at 37°C. After incubation with LIF for 72h, proliferative inhibition of K562 cells observed by

 Tel: 1-631-559-9269 1-516-512-3133

 Email: info@creative-biomart.com  Fax: 1-631-938-8127

 45-1 Ramsey Road, Shirley, NY 11967, USA

inverted microscope was shown. Cell viability was assessed by CCK-8(Cell Counting Kit-8) assay after incubation with recombinant LIF for 72h. It was obvious that LIF significantly inhibit cell viability of K562 cells. The ED50 is 1.44µg/ml.

Molecular Mass	23.3kDa
Endotoxin	<1.0EU per 1µg (determined by the LAL method).
Purity	> 90% as determined by SDS-PAGE.
Storage	Avoid repeated freeze/thaw cycles. Store at -20°C for 12 months. Aliquot and store at -80°C for 12 months.
Reconstitution	Reconstitute in 10mM PBS (pH7.4) to a concentration of 0.1-1.0 mg/mL. Do not vortex.

GENE INFORMATION

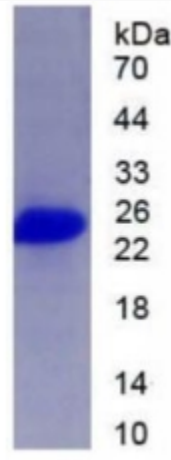
Gene Name	Lif leukemia inhibitory factor [<i>Rattus norvegicus</i>]
Official Symbol	Lif
Synonyms	LIF; leukemia inhibitory factor; cholinergic neuronal differentiation factor; leukemia inhibitory factor (cholinergic differentiation factor);
Gene ID	60584
mRNA Refseq	NM_022196
Protein Refseq	NP_071532

 Tel: 1-631-559-9269 1-516-512-3133

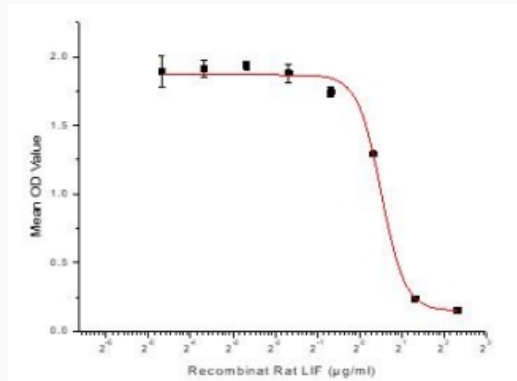
 Email: info@creative-biomart.com  Fax: 1-631-938-8127

 45-1 Ramsey Road, Shirley, NY 11967, USA

SDS-PAGE



Activity



 Tel: 1-631-559-9269 1-516-512-3133

 Email: info@creative-biomart.com  Fax: 1-631-938-8127

 45-1 Ramsey Road, Shirley, NY 11967, USA