

## Recombinant Mouse Liltrb3 protein, His-tagged

Cat. No. Liltrb3-5332M Lot. No. (See product label)

### SPECIFICATION

<b>Product Overview</b>	Recombinant Mouse Liltrb3 protein(P97484)(25-642aa), fused with C-terminal His tag, was expressed in HEK293.
<b>Species</b>	Mouse
<b>Source</b>	HEK293
<b>ProteinLength</b>	25-642aa
<b>Tag</b>	C-His
<b>Form</b>	If the delivery form is liquid, the default storage buffer is Tris/PBS-based buffer, 5%-50% glycerol. If the delivery form is lyophilized powder, the buffer before lyophilization is Tris/PBS-based buffer, 6% Trehalose, pH 8.0.
<b>Molecular Mass</b>	70.8 kDa
<b>Purity</b>	Greater than 90% as determined by SDS-PAGE. Greater than 90% as determined by SEC-HPLC.
<b>Storage</b>	Store at -20°C/-80°C upon receipt, aliquoting is necessary for mutiple use. Avoid repeated freeze-thaw cycles.
<b>Reconstitution</b>	We recommend that this vial be briefly centrifuged prior to opening to bring the contents to the bottom. Please reconstitute protein in deionized sterile water to a

 Tel: 1-631-559-9269 1-516-512-3133

 Email: [info@creative-biomart.com](mailto:info@creative-biomart.com)  Fax: 1-631-938-8127

 45-1 Ramsey Road, Shirley, NY 11967, USA

concentration of 0.1-1.0 mg/mL. We recommend to add 5-50% of glycerol (final concentration) and aliquot for long-term storage at -20°C/-80°C.

**AA Sequence**

SLPKPILRVQPDSVVSRRTKVTFLLCEETIGANEYRLYKDGKLYKTVTKNKQKPENKAE  
 FSFSNVDLSNAGQYRCSYSTQYKSSGYSDLLELVVTGHYWTPSLLAQASPVVTS  
 GGYVTLQCESWHNDHKFILTVEGPQKLSWTQDSQYNYSTRKYHALFSVGPVTPNQRWI  
 CRCYSYDRNRPYVWSPPSESVELLVSGNLQKPTIKAEPGSVITSKRAMTIWCQGNL  
 DAEVYFLHNEKSQKTQSTQTLQEPGNKGGKFFIPSVTLQHAGQYRCYCYGSAGWSQ  
 PSDTLELVVTGIYEYEPRLSVLPSPVVTAGGNMTLHCASDFPYDKFILTKEKDKKFGN  
 SLDTEHISSSGQYRALFIIGPTTPTHTGAFRCYGYKYNAPQLWSVPSALQQILISGLSK  
 KPSLLTHQGHILDPGMTLTLQCFSDINYDRFALHKVGGADIMQHSSQQTDTGFSVAN  
 FTLGYVSSSTGGQYRCYGAHNLSSEWSASSEPLDILITGQLPLTPSLSVQPNHTVHS  
 GETVSLLCWSMDSVDTFILSKEGSAQQPLRLKSKSHDQQSQAEFMSAVTSHLSGT  
 YRCYGAQDSSFYLLSSASAPVELTVSGPIETSTPPPTMSMPLGGLHMYLK

## GENE INFORMATION

<b>Gene Name</b>	Lilrb3 leukocyte immunoglobulin-like receptor, subfamily B (with TM and ITIM domains), member 3 [ <i>Mus musculus</i> ]
<b>Official Symbol</b>	Lilrb3
<b>Synonyms</b>	LILRB3; leukocyte immunoglobulin-like receptor, subfamily B (with TM and ITIM domains), member 3; leukocyte immunoglobulin-like receptor subfamily B member 3; cell-surface glycoprotein p91; paired immunoglobulin-like receptor B; leukocyte immunoglobulin-like receptor 3; Gp91; Pirb; LIR-3; PIR-B;
<b>Gene ID</b>	18733
<b>mRNA Refseq</b>	NM_011095

 Tel: 1-631-559-9269 1-516-512-3133

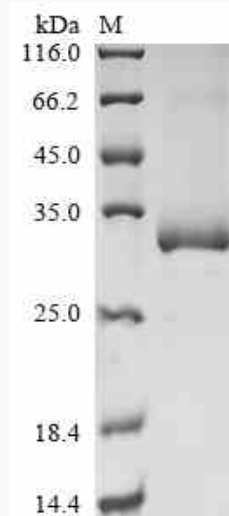
 Email: [info@creative-biomart.com](mailto:info@creative-biomart.com)  Fax: 1-631-938-8127

 45-1 Ramsey Road, Shirley, NY 11967, USA

Protein Refseq

NP\_035225

SDS-PAGE



 Tel: 1-631-559-9269 1-516-512-3133

 Email: [info@creative-biomart.com](mailto:info@creative-biomart.com)  Fax: 1-631-938-8127

 45-1 Ramsey Road, Shirley, NY 11967, USA