

## Recombinant Mouse Loxl4 Protein, His-tagged

Cat. No. Loxl4-1742M Lot. No. (See product label)

### SPECIFICATION

<b>Product Overview</b>	Recombinant Mouse Loxl4 Protein (Pro534-Ser737) with N-His tag was expressed in E. coli.
<b>Species</b>	Mouse
<b>Source</b>	E.coli
<b>ProteinLength</b>	Pro534-Ser737
<b>Description</b>	Enables protein-lysine 6-oxidase activity. Predicted to be involved in collagen fibril organization and peptidyl-lysine oxidation. Located in extracellular region. Is expressed in several structures, including gut; male reproductive gland or organ; otic capsule; skeleton; and trachea. Orthologous to human LOXL4 (lysyl oxidase like 4).
<b>Form</b>	Freeze-dried powder
<b>Molecular Mass</b>	Predicted Molecular Mass: 27.3 kDa Accurate Molecular Mass: 27 kDa
<b>Purity</b>	> 95%
<b>Applications</b>	Positive Control; Immunogen; SDS-PAGE; WB.
<b>Stability</b>	The thermal stability is described by the loss rate. The loss rate was determined by accelerated thermal degradation test, that is, incubate the protein at 37 centigrade for

 Tel: 1-631-559-9269 1-516-512-3133

 Email: [info@creative-biomart.com](mailto:info@creative-biomart.com)  Fax: 1-631-938-8127

 45-1 Ramsey Road, Shirley, NY 11967, USA

48h, and no obvious degradation and precipitation were observed. The loss rate is less than 5% within the expiration date under appropriate storage condition.

**Storage**

Avoid repeated freeze/thaw cycles. Store at 2-8 centigrade for one month. Aliquot and store at -80 centigrade for 12 months.

**Storage Buffer**

20mM Tris, 150mM NaCl, pH8.0, containing 1mM EDTA, 1mM DTT, 0.01% SKL, 5% Trehalose and Proclin300.

**Reconstitution**

Reconstitute in 20mM Tris, 150mM NaCl (pH8.0) to a concentration of 0.1-1.0 mg/mL. Do not vortex.

## GENE INFORMATION

**Gene Name**

[Loxl4 lysyl oxidase-like 4 \[ Mus musculus \(house mouse\) \]](#)

**Official Symbol**

[Loxl4](#)

**Synonyms**

LOXL4; lysyl oxidase-like 4; lysyl oxidase homolog 4; lysyl oxidase-like protein 4; lysyl oxidase-related protein C; Loxc; 4833426I20Rik;

**Gene ID**

[67573](#)

**mRNA Refseq**

[NM\\_001164311](#)

**Protein Refseq**

[NP\\_001157783](#)

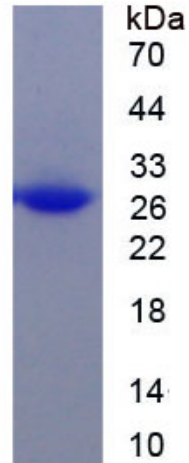
**UniProt ID**

[Q924C6](#)

 Tel: 1-631-559-9269 1-516-512-3133

 Email: [info@creative-biomart.com](mailto:info@creative-biomart.com)  Fax: 1-631-938-8127

 45-1 Ramsey Road, Shirley, NY 11967, USA



Tel: 1-631-559-9269 1-516-512-3133

Email: [info@creative-biomart.com](mailto:info@creative-biomart.com) Fax: 1-631-938-8127

45-1 Ramsey Road, Shirley, NY 11967, USA