

Recombinant Mouse Lpcat2 Protein, His&GST-tagged

Cat. No. Lpcat2-1743M Lot. No. (See product label)

SPECIFICATION

Product Overview	Recombinant Mouse Lpcat2 Protein (Met1-Val300) with N-His&GST tag was expressed in E. coli.
Species	Mouse
Source	E.coli
ProteinLength	Met1-Val300
Description	Enables 1-acylglycerophosphocholine O-acyltransferase activity and 1-alkylglycerophosphocholine O-acetyltransferase activity. Involved in membrane organization and platelet activating factor biosynthetic process. Located in Golgi stack; endoplasmic reticulum; and membrane. Orthologous to human LPCAT2 (lysophosphatidylcholine acyltransferase 2).
Form	Freeze-dried powder
Molecular Mass	Predicted Molecular Mass: 63.0 kDa Accurate Molecular Mass: 63 kDa
Purity	> 90%
Applications	Positive Control; Immunogen; SDS-PAGE; WB.
Stability	The thermal stability is described by the loss rate. The loss rate was determined by

 Tel: 1-631-559-9269 1-516-512-3133

 Email: info@creative-biomart.com  Fax: 1-631-938-8127

 45-1 Ramsey Road, Shirley, NY 11967, USA



accelerated thermal degradation test, that is, incubate the protein at 37 centigrade for 48h, and no obvious degradation and precipitation were observed. The loss rate is less than 5% within the expiration date under appropriate storage condition.

Storage

Avoid repeated freeze/thaw cycles. Store at 2-8 centigrade for one month. Aliquot and store at -80 centigrade for 12 months.

Storage Buffer

20mM Tris, 150mM NaCl, pH8.0, containing 1mM EDTA, 1mM DTT, 0.01% SKL, 5% Trehalose and Proclin300.

Reconstitution

Reconstitute in 20mM Tris, 150mM NaCl (pH8.0) to a concentration of 0.1-1.0 mg/mL. Do not vortex.

GENE INFORMATION

Gene Name

[Lpcat2 lysophosphatidylcholine acyltransferase 2 \[Mus musculus \(house mouse\) \]](#)

Official Symbol

[Lpcat2](#)

Synonyms

LPCAT2; lysophosphatidylcholine acyltransferase 2; LPCAT-2; lysoPAFAT; lysoPAFAT/LPCAT2; LPC acyltransferase 2; acyltransferase like 1; acyltransferase-like 1; acyltransferase like 1A; lysoPC acyltransferase 2; lyso-PAF acetyltransferase; acetyl-CoA:lyso-PAF acetyltransferase; 1-acylglycerophosphocholine O-acyltransferase; 1-alkylglycerophosphocholine O-acetyltransferase; acyl-CoA:lysophosphatidylcholine acyltransferase member 1; acetyl-CoA:lyso-platelet-activating factor acetyltransferase; Ayt11; Ayt11a; lpafat1; A330042H22;

Gene ID

[270084](#)

mRNA Refseq

[NM_173014](#)

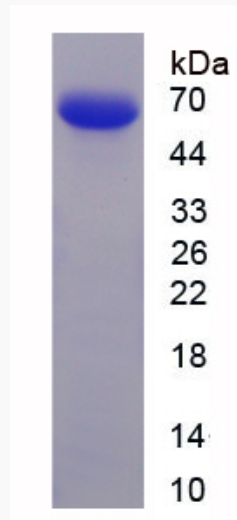
Tel: 1-631-559-9269 1-516-512-3133

Email: info@creative-biomart.com Fax: 1-631-938-8127

45-1 Ramsey Road, Shirley, NY 11967, USA

Protein Refseq NP_766602

UniProt ID Q8BY16



Tel: 1-631-559-9269 1-516-512-3133

Email: info@creative-biomart.com Fax: 1-631-938-8127

45-1 Ramsey Road, Shirley, NY 11967, USA