

Recombinant Mouse Lrg1 protein, His-tagged

Cat. No. Lrg1-7854M Lot. No. (See product label)

SPECIFICATION

Product Overview	Recombinant Mouse Lrg1 protein(Q91XL1)(Lys33-Leu342), fused with C-terminal His tag, was expressed in HEK293.
Species	Mouse
Source	HEK293
ProteinLength	Lys33-Leu342
Tag	C-His
Form	Supplied as 0.22µm filtered solution in PBS (pH 7.4).
Molecular Mass	The protein has a predicted MW of 34.9 kDa. Due to glycosylation, the protein migrates to 48-52 kDa based on Tris-Bis PAGE result.
Endotoxin	Less than 1EU per µg by the LAL method.
Purity	> 95% as determined by Tris-Bis PAGE;> 95% as determined by HPLC
Storage	Valid for 12 months from date of receipt when stored at -80°C. Recommend to aliquot the protein into smaller quantities for optimal storage. Please do not repeated freeze-thaw cycles.
Reconstitution	It is recommended that sterile water be added to the vial to prepare a stock solution of

 Tel: 1-631-559-9269 1-516-512-3133

 Email: info@creative-biomart.com  Fax: 1-631-938-8127

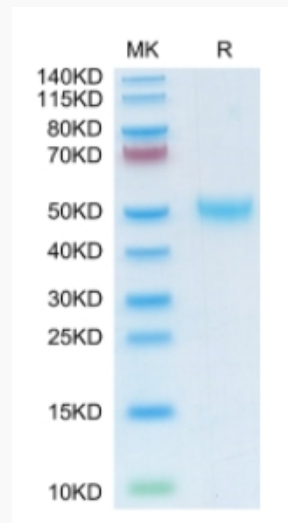
 45-1 Ramsey Road, Shirley, NY 11967, USA

0.2 ug/ul. Centrifuge the vial at 4°C before opening to recover the entire contents.

GENE INFORMATION

Gene Name	Lrg1 leucine-rich alpha-2-glycoprotein 1 [Mus musculus]
Official Symbol	Lrg1
Synonyms	LRG1; leucine-rich alpha-2-glycoprotein 1; leucine-rich alpha-2-glycoprotein; Lrg; Lrhg; 1300008B03Rik; 2310031E04Rik; MGC102387;
Gene ID	76905
mRNA Refseq	NM_029796
Protein Refseq	NP_084072

Tris-Bis PAGE



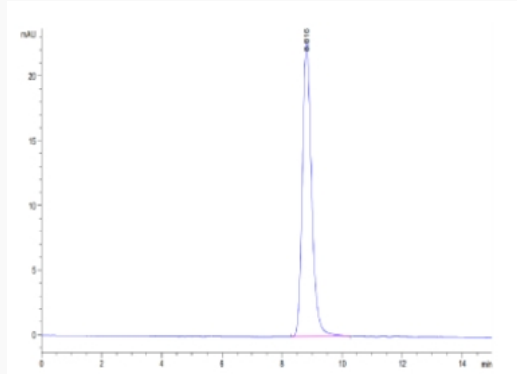
Tel: 1-631-559-9269 1-516-512-3133

Email: info@creative-biomart.com Fax: 1-631-938-8127

45-1 Ramsey Road, Shirley, NY 11967, USA



SEC-HPLC



Tel: 1-631-559-9269 1-516-512-3133

Email: info@creative-biomart.com Fax: 1-631-938-8127

45-1 Ramsey Road, Shirley, NY 11967, USA