

## Recombinant Mouse Lrp1b protein, His & T7-tagged

Cat. No. Lrp1b-7873M Lot. No. (See product label)

### SPECIFICATION

<b>Product Overview</b>	Recombinant Mouse Lrp1b aa. (Leu31~Lys194 (Accession # Q9JI18)) fused with N-terminal His & T7 tag was produced in E. coli cells.
<b>Species</b>	Mouse
<b>Source</b>	E.coli
<b>ProteinLength</b>	Leu31~Lys194
<b>Form</b>	Freeze-dried powder
<b>Molecular Mass</b>	27kDa as determined by SDS-PAGE reducing conditions.
<b>Endotoxin</b>	<1.0EU per 1ug (determined by the LAL method)
<b>Purity</b>	>90%
<b>Characteristic</b>	The isoelectric point is 4.4.
<b>Applications</b>	SDS-PAGE; WB; ELISA; IP
<b>Stability</b>	The thermal stability is described by the loss rate of the target protein. The loss rate was determined by accelerated thermal degradation test, that is, incubate the protein at 37°C for 48h, and no obvious degradation and precipitation were observed. (Referring from China Biological Products Standard, which was calculated by the

 Tel: 1-631-559-9269 1-516-512-3133

 Email: [info@creative-biomart.com](mailto:info@creative-biomart.com)  Fax: 1-631-938-8127

 45-1 Ramsey Road, Shirley, NY 11967, USA

Arrhenius equation.) The loss of this protein is less than 5% within the expiration date under appropriate storage condition.

**Storage**

Avoid repeated freeze/thaw cycles. Store at 2-8°C for one month. Aliquot and store at -80°C for 12 months.

**Storage Buffer**

Supplied as lyophilized form in 20mM Tris, 150mM NaCl, pH8.0, containing 1mM EDTA, 1mM DTT, 0.01% sarcosyl, 5% trehalose, and preservative.

**Reconstitution**

Reconstitute in sterile ddH<sub>2</sub>O.

## GENE INFORMATION

**Gene Name**

[Lrp1b low density lipoprotein-related protein 1B \(deleted in tumors\) \[ Mus musculus \(house mouse\) \]](#)

**Official Symbol**

[Lrp1b](#)

**Synonyms**

Lrp1b; low density lipoprotein-related protein 1B (deleted in tumors); LRP-DIT; 9630004P12Rik; low-density lipoprotein receptor-related protein 1B; LRP-1B; low-density lipoprotein receptor-related protein-deleted in tumor

**Gene ID**

[94217](#)

**mRNA Refseq**

[NM\\_053011.2](#)

**Protein Refseq**

[NP\\_443737.2](#)

**UniProt ID**

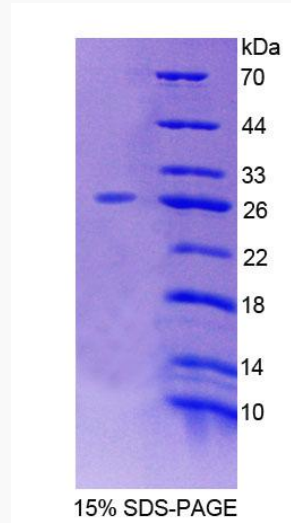
[Q9JI18](#)

 Tel: 1-631-559-9269 1-516-512-3133

 Email: [info@creative-biomart.com](mailto:info@creative-biomart.com)  Fax: 1-631-938-8127

 45-1 Ramsey Road, Shirley, NY 11967, USA

**SDS-PAGE**



 Tel: 1-631-559-9269 1-516-512-3133

 Email: [info@creative-biomart.com](mailto:info@creative-biomart.com)  Fax: 1-631-938-8127

 45-1 Ramsey Road, Shirley, NY 11967, USA