

## Recombinant Rat Lrp5 protein, His-tagged

Cat. No. Lrp5-7871R Lot. No. (See product label)

### SPECIFICATION

|                         |   |
|-------------------------|---|
| <b>Product Overview</b> | Recombinant Rat Lrp5 aa. (Ile102~Cys336) fused with N-terminal His tag was produced in E. coli cells.   |
| <b>Species</b>          | Rat   |
| <b>Source</b>           | E.coli  |
| <b>ProteinLength</b>    | Ile102~Cys336   |
| <b>Form</b>             | Freeze-dried powder   |
| <b>Molecular Mass</b>   | 30kDa as determined by SDS-PAGE reducing conditions.  |
| <b>Endotoxin</b>        | <1.0EU per 1ug (determined by the LAL method)   |
| <b>Purity</b>           | >95%  |
| <b>Characteristic</b>   | The isoelectric point is 5.4.   |
| <b>Applications</b>     | SDS-PAGE; WB; ELISA; IP; CoIP; Purification; Amine Reactive Labeling  |
| <b>Stability</b>        | The thermal stability is described by the loss rate of the target protein. The loss rate was determined by accelerated thermal degradation test, that is, incubate the protein at 37°C for 48h, and no obvious degradation and precipitation were observed. (Referring from China Biological Products Standard, which was calculated by the |

 Tel: 1-631-559-9269 1-516-512-3133

 Email: [info@creative-biomart.com](mailto:info@creative-biomart.com)  Fax: 1-631-938-8127

 45-1 Ramsey Road, Shirley, NY 11967, USA



Arrhenius equation.) The loss of this protein is less than 5% within the expiration date under appropriate storage condition.

**Storage**

Avoid repeated freeze/thaw cycles. Store at 2-8°C for one month. Aliquot and store at -80°C for 12 months.

**Concentration**

200µg/mL

**Storage Buffer**

100mM NaHCO<sub>3</sub>, 500mM NaCl, pH8.3, containing 1mM EDTA, 1mM DTT, 0.01% sarcosyl, 5%Trehalose and Proclin300.

**Reconstitution**

Reconstitute in 100mM NaHCO<sub>3</sub>, 500mM NaCl (pH8.3) to a concentration of 0.1-1.0 mg/mL. Do not vortex.

## GENE INFORMATION

**Gene Name**

Lrp5 LDL receptor related protein 5 [ Rattus norvegicus (Norway rat) ]

**Official Symbol**

Lrp5

**Synonyms**

Lrp5; LDL receptor related protein 5; low-density lipoprotein receptor-related protein 5

**Gene ID**

293649

**mRNA Refseq**

NM\_001106321.2

**Protein Refseq**

NP\_001099791.2

**UniProt ID**

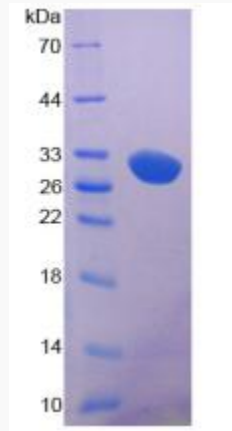
B2RY11

Tel: 1-631-559-9269 1-516-512-3133

Email: [info@creative-biomart.com](mailto:info@creative-biomart.com) Fax: 1-631-938-8127

45-1 Ramsey Road, Shirley, NY 11967, USA

**SDS-PAGE**



 Tel: 1-631-559-9269 1-516-512-3133

 Email: [info@creative-biomart.com](mailto:info@creative-biomart.com)  Fax: 1-631-938-8127

 45-1 Ramsey Road, Shirley, NY 11967, USA