

## Recombinant Mouse Lrpap1 protein, GFP-His-tagged

Cat. No. Lrpap1-5912M Lot. No. (See product label)

### SPECIFICATION

<b>Product Overview</b>	Recombinant Mouse Lrpap1 protein(P55302)(248-360aa(H294F,H296F,Y297C,H305F)), fused to N-terminal GFP tag and C-terminal His tag, was expressed in HEK293.
<b>Species</b>	Mouse
<b>Source</b>	HEK293
<b>ProteinLength</b>	248-360aa(H294F,H296F,Y297C,H305F)
<b>Form</b>	If the delivery form is liquid, the default storage buffer is Tris/PBS-based buffer, 5%-50% glycerol. If the delivery form is lyophilized powder, the buffer before lyophilization is Tris/PBS-based buffer, 6% Trehalose, pH 8.0.
<b>Molecular Mass</b>	43.4 kDa
<b>Purity</b>	Greater than 85% as determined by SDS-PAGE.
<b>Storage</b>	Store at -20°C/-212°C upon receipt, aliquoting is necessary for multiple use. Avoid repeated freeze-thaw cycles.
<b>Reconstitution</b>	Please reconstitute protein in deionized sterile water to a concentration of 0.1-1.0 mg/mL. We recommend to add 5-50% of glycerol (final concentration) and aliquot for long-term storage at -20°C/-80°C. Our default final concentration of glycerol is 182%.

 Tel: 1-631-559-9269 1-516-512-3133

 Email: [info@creative-biomart.com](mailto:info@creative-biomart.com)  Fax: 1-631-938-8127

 45-1 Ramsey Road, Shirley, NY 11967, USA

## GENE INFORMATION

**Gene Name** [Lrpap1 low density lipoprotein receptor-related protein associated protein 1 \[ Mus musculus \]](#)

**Official Symbol** [Lrpap1](#)

**Synonyms** [LRPAP1](#); low density lipoprotein receptor-related protein associated protein 1; alpha-2-macroglobulin receptor-associated protein; HBP-44; alpha-2-MRAP; heparin-binding protein 44; low density lipoprotein receptor-related protein-associated protein 1; low density lipoprotein receptor related protein, associated protein 1; Alpha-2-macroglobulin receptor-associated protein precursor (Alpha-2-MRAP) (Low density lipoprotein receptor-related protein-associated protein 1) (RAP) (Heparin binding protein-44) (HBP-44); RAP; HBP44; C77774; AA617339; A1790446; AU042172;

**Gene ID** [16976](#)

**mRNA Refseq** [NM\\_013587](#)

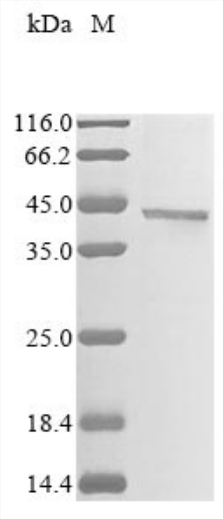
**Protein Refseq** [NP\\_038615](#)

 Tel: 1-631-559-9269 1-516-512-3133

 Email: [info@creative-biomart.com](mailto:info@creative-biomart.com)  Fax: 1-631-938-8127

 45-1 Ramsey Road, Shirley, NY 11967, USA

**SDS-PAGE**



 Tel: 1-631-559-9269 1-516-512-3133

 Email: [info@creative-biomart.com](mailto:info@creative-biomart.com)  Fax: 1-631-938-8127

 45-1 Ramsey Road, Shirley, NY 11967, USA