

## Recombinant Mouse Lrpap1 Protein, His-tagged

Cat. No. Lrpap1-7272M Lot. No. (See product label)

### SPECIFICATION

<b>Product Overview</b>	Recombinant mouse Lspap1, fused to His-tag at N-terminus, was expressed in E. coli and purified by using conventional chromatography techniques.
<b>Species</b>	Mouse
<b>Source</b>	E.coli
<b>ProteinLength</b>	29-360
<b>Description</b>	Interacts with LRP1/alpha-2-macroglobulin receptor and glycoprotein 330.
<b>Form</b>	Liquid
<b>Molecular Mass</b>	41.4 kDa
<b>AA Sequence</b>	<p>MGSSHHHHHSSGLVPRGSHMGSQPIAGHGGKYSREKNEPEMAAKRESGEEFRM  EKLNQLWEKAKRLHLSPVRLAELHSDLKIQERDELNWKKLKVEGLDKDGEKEAKLIH  NLNVILARYGLDGRKDAQMVHSNALNEDTQDELGDPRLKLVHAKTSGKFSSEEL  DKLWREFLHYKEKIQEYNVLLDLSRAEEGYENLLSPSDMAHIKSDTLISKHSELKDR  LRSINQGLDRLRKVSHQGYGSTTEFEEPRVIDLWDLAQSANFTEKELESFRELKHF  EAKIEKHNYQKQLEISHQKLKHVESIGDPEHISRNKEKYVLLLEKTKELGYKVKKHL  QDLSSRVSRARHNEL</p>
<b>Purity</b>	> 90 % by SDS-PAGE

 Tel: 1-631-559-9269 1-516-512-3133

 Email: [info@creative-biomart.com](mailto:info@creative-biomart.com)  Fax: 1-631-938-8127

 45-1 Ramsey Road, Shirley, NY 11967, USA

<b>Stability</b>	Shelf life: one year from despatch.
<b>Storage</b>	Store undiluted at 2-8 centigrade for one week or (in aliquots) at -20 to -80 centigrade for longer. Avoid repeated freezing and thawing.
<b>Concentration</b>	1.0 mg/mL (determined by absorbance at 280nm)
<b>Storage Buffer</b>	In Phosphate buffered saline (pH7.4) containing 10 % glycerol.

## GENE INFORMATION

<b>Gene Name</b>	Lrpap1 low density lipoprotein receptor-related protein associated protein 1 [ Mus musculus (house mouse) ]
<b>Official Symbol</b>	Lrpap1
<b>Synonyms</b>	Lrpap1; low density lipoprotein receptor-related protein associated protein 1; RAP; HBP44; C77774; AA617339; A1790446; AU042172; alpha-2-macroglobulin receptor-associated protein; alpha-2-MRAP; alpha-2-macroglobulin receptor-associated protein precursor (alpha-2-MRAP); heparin-binding protein 44
<b>Gene ID</b>	16976
<b>mRNA Refseq</b>	NM_013587
<b>Protein Refseq</b>	NP_038615
<b>UniProt ID</b>	P55302

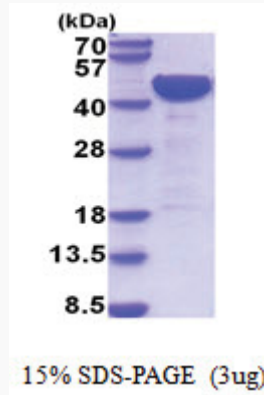
 Tel: 1-631-559-9269 1-516-512-3133

 Email: [info@creative-biomart.com](mailto:info@creative-biomart.com)  Fax: 1-631-938-8127

 45-1 Ramsey Road, Shirley, NY 11967, USA



SDS-PAGE



Tel: 1-631-559-9269 1-516-512-3133

Email: [info@creative-biomart.com](mailto:info@creative-biomart.com) Fax: 1-631-938-8127

45-1 Ramsey Road, Shirley, NY 11967, USA