

Recombinant Rat Ltb Protein, His-tagged

Cat. No. Ltb-1750R **Lot. No.** (See product label)

SPECIFICATION

Product Overview	Recombinant Rat Ltb Protein (Ala155-Val305) with N-His tag was expressed in E. coli.
Species	Rat
Source	E.coli
ProteinLength	Ala155-Val305
Description	Predicted to enable tumor necrosis factor binding activity. Predicted to be involved in positive regulation of interleukin-12 production. Predicted to act upstream of or within gene expression; lymph node development; and skin development. Predicted to be integral component of membrane. Orthologous to human LTB (lymphotoxin beta).
Form	Freeze-dried powder
Molecular Mass	Predicted Molecular Mass: 2.2 kDa
Purity	> 97%
Applications	Positive Control; Immunogen; SDS-PAGE; WB.
Stability	The thermal stability is described by the loss rate. The loss rate was determined by accelerated thermal degradation test, that is, incubate the protein at 37 centigrade for 48h, and no obvious degradation and precipitation were observed. The loss rate is

 Tel: 1-631-559-9269 1-516-512-3133

 Email: info@creative-biomart.com  Fax: 1-631-938-8127

 45-1 Ramsey Road, Shirley, NY 11967, USA

less than 5% within the expiration date under appropriate storage condition.

Storage

Avoid repeated freeze/thaw cycles. Store at 2-8 centigrade for one month. Aliquot and store at -80 centigrade for 12 months.

Storage Buffer

PBS, pH7.4, containing 0.01% SKL, 1mM DTT, 5% Trehalose and Proclin300.

Reconstitution

Reconstitute in 20mM Tris, 150mM NaCl (pH8.0) to a concentration of 0.1-1.0 mg/mL.
Do not vortex.

GENE INFORMATION

Gene Name

Ltb lymphotoxin beta (TNF superfamily, member 3) [*Rattus norvegicus* (Norway rat)]

Official Symbol

Ltb

Synonyms

LTB; lymphotoxin beta (TNF superfamily, member 3); lymphotoxin beta; lymphotoxin B; MGC108924;

Gene ID

361795

mRNA Refseq

NM_212507

Protein Refseq

NP_997672

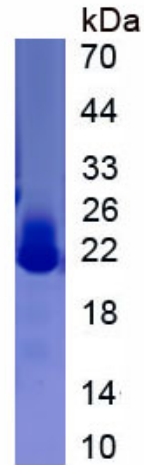
UniProt ID

Q6MG45

 Tel: 1-631-559-9269 1-516-512-3133

 Email: info@creative-biomart.com  Fax: 1-631-938-8127

 45-1 Ramsey Road, Shirley, NY 11967, USA



Tel: 1-631-559-9269 1-516-512-3133

Email: info@creative-biomart.com Fax: 1-631-938-8127

45-1 Ramsey Road, Shirley, NY 11967, USA