

## Recombinant Mouse Ltb protein, His-tagged

Cat. No. Ltb-7122M    Lot. No. (See product label)

### SPECIFICATION

<b>Product Overview</b>	Recombinant Mouse Ltb aa. (Ile58~Met304) fused with N-terminal His tag was produced in E. coli cells.
<b>Species</b>	Mouse
<b>Source</b>	E.coli
<b>ProteinLength</b>	Ile58~Met304
<b>Form</b>	Freeze-dried powder
<b>Molecular Mass</b>	32kDa as determined by SDS-PAGE reducing conditions.
<b>Endotoxin</b>	<1.0EU per 1ug (determined by the LAL method)
<b>Purity</b>	>98%
<b>Characteristic</b>	The isoelectric point is 6.8.
<b>Applications</b>	Positive Control; Immunogen; SDS-PAGE; WB.
<b>Stability</b>	The thermal stability is described by the loss rate of the target protein. The loss rate was determined by accelerated thermal degradation test, that is, incubate the protein at 37°C for 48h, and no obvious degradation and precipitation were observed. (Referring from China Biological Products Standard, which was calculated by the

 Tel: 1-631-559-9269    1-516-512-3133

 Email: [info@creative-biomart.com](mailto:info@creative-biomart.com)     Fax: 1-631-938-8127

 45-1 Ramsey Road, Shirley, NY 11967, USA

Arrhenius equation.) The loss of this protein is less than 5% within the expiration date under appropriate storage condition.

**Storage**

Avoid repeated freeze/thaw cycles. Store at 2-8°C for one month. Aliquot and store at -80°C for 12 months.

**Concentration**

200ug/mL

**Storage buffer**

10mM PBS, pH7.4, containing 1mM DTT, 5% trehalose, 0.01% sarcosyl and Proclin300

**Reconstitution**

Reconstitute in 10mM PBS (pH7.4) to a concentration of 0.1-1.0 mg/mL. Do not vortex

## GENE INFORMATION

**Gene Name**

[Ltb lymphotoxin B \[ Mus musculus \(house mouse\) \]](#)

**Official Symbol**

[Ltb](#)

**Synonyms**

Ltb; lymphotoxin B; p33; Tnfc; LTbeta; Tnfsf3; Tnlg1c; AI662801; lymphotoxin-beta; LT-beta; TNF-C; tumor necrosis factor C; tumor necrosis factor ligand 1c; tumor necrosis factor ligand superfamily member 3

**Gene ID**

[16994](#)

**mRNA Refseq**

[NM\\_008518.2](#)

**Protein Refseq**

[NP\\_032544.1](#)

**UniProt ID**

[P41155](#)

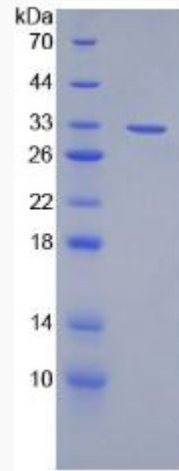
 Tel: 1-631-559-9269 1-516-512-3133

 Email: [info@creative-biomart.com](mailto:info@creative-biomart.com)  Fax: 1-631-938-8127

 45-1 Ramsey Road, Shirley, NY 11967, USA



SDS-PAGE



Tel: 1-631-559-9269 1-516-512-3133

Email: [info@creative-biomart.com](mailto:info@creative-biomart.com) Fax: 1-631-938-8127

45-1 Ramsey Road, Shirley, NY 11967, USA