

Recombinant Mouse Ltbr protein, His & GST-tagged

Cat. No. Ltbr-2684M Lot. No. (See product label)

SPECIFICATION

Product Overview	Recombinant Mouse Ltbr aa. (Pro128~Tyr395) fused with N-terminal His & GST tag was produced in E. coli cells.
Species	Mouse
Source	E.coli
ProteinLength	Pro128~Tyr395
Form	Freeze-dried powder
Molecular Mass	47kDa as determined by SDS-PAGE reducing conditions.
Endotoxin	<1.0EU per 1g (determined by the LAL method)
Purity	>92%
Characteristic	The isoelectric point is 5.4.
Applications	SDS-PAGE; WB; ELISA; IP; CoIP; Purification; Amine Reactive Labeling.
Stability	The thermal stability is described by the loss rate. The loss rate was determined by accelerated thermal degradation test, that is, incubate the protein at 37°C for 48h, and no obvious degradation and precipitation were observed. The loss rate is less than 5% within the expiration date under appropriate storage condition.

 Tel: 1-631-559-9269 1-516-512-3133

 Email: info@creative-biomart.com  Fax: 1-631-938-8127

 45-1 Ramsey Road, Shirley, NY 11967, USA

Storage	Avoid repeated freeze/thaw cycles. Store at 2-8°C for one month. Aliquot and store at -80°C for 12 months.
Concentration	200µg/mL
Storage buffer	20mM Tris, 150mM NaCl, pH8.0, containing 1mM EDTA, 1mM DTT, 0.01% sarcosyl, 5%Trehalose and Proclin300.
Reconstitution	Reconstitute in 20mM Tris, 150mM NaCl (pH8.0) to a concentration of 0.1-1.0 mg/mL. Do not vortex.

GENE INFORMATION

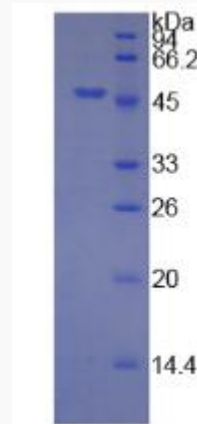
Gene Name	Ltbr lymphotoxin B receptor [Mus musculus (house mouse)]
Official Symbol	Ltbr
Synonyms	CD18; Ltar; TNFCR; Tnfbr; TNFRrp; LTbetaR; TNFR-RP; Tnfrsf3; AI256028; TNFR2-RP; TNF-R-III; LT beta-R; LT-beta receptor; TNF receptor-related protein; lymphotoxin-beta receptor
Gene ID	17000
mRNA Refseq	NM_010736.3
Protein Refseq	NP_034866.1
UniProt ID	P50284

 Tel: 1-631-559-9269 1-516-512-3133

 Email: info@creative-biomart.com  Fax: 1-631-938-8127

 45-1 Ramsey Road, Shirley, NY 11967, USA

SDS-PAGE



 Tel: 1-631-559-9269 1-516-512-3133

 Email: info@creative-biomart.com  Fax: 1-631-938-8127

 45-1 Ramsey Road, Shirley, NY 11967, USA