

Recombinant Firefly Luciferase, His tagged, Protein G Labeled

Cat. No. Luciferase-04F **Lot. No.** (See product label)

SPECIFICATION

Product Overview	Protein G labeled recombinant firefly luciferase with His tag was expressed in E. coli.
Species	Firefly
Source	E.coli
Conjugation/Label	Protein G
Description	<p>Antibody Binding Firefly Luciferase is a Protein G-Firefly Luciferase (protein G-Fluc) fusion protein. It consists of protein G and firefly luciferase (Fluc), while the two proteins connect via a short peptide. Protein G tightly binds to IgG molecules from rabbit, human, mouse, goat, sheep, cow, and rat. In addition, protein G conjugates are especially valuable for detecting antibodies that bind poorly to protein A, such as human IgG3, mouse IgG1, and immunoglobulins from rat, sheep, and horse. Firefly luciferase (Fluc) is a light-emitting enzyme to estimate gene expression. It catalyzes the oxidation of firefly luciferin, allowing its detection by a luminometer. As an antibody binding luciferase, protein G-Fluc can avoid harmful labeling of the detecting antibody. Because staining protocols vary with application, the appropriate dilution of Antibody Binding Firefly Luciferase should be determined empirically.</p>
Form	Liquid
Molecular Mass	85.3 kDa
Purity	≥ 90% by SDS-PAGE

 Tel: 1-631-559-9269 1-516-512-3133

 Email: info@creative-biomart.com  Fax: 1-631-938-8127

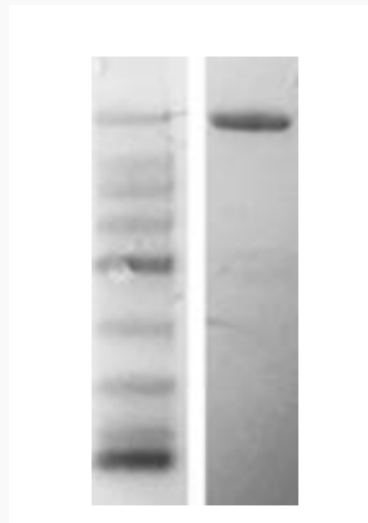
 45-1 Ramsey Road, Shirley, NY 11967, USA

Applications	In vitro research use only
Storage	Short Term Storage: -20 centigrade Long Term Storage: -20 centigrade Avoid freeze/thaw cycle. Aliquot upon arrival.
Storage Buffer	50 mM sodium phosphate, 100 mM NaCl, 1 mM DTT, pH7.2, 50% glycerol
Concentration	0.5-1.0 mg/mL
Shipping	Cold packs

GENE INFORMATION

Synonyms	Luciferase; Luciferin 4-monooxygenase; EC:1.13.12.7
UniProt ID	Q27757

WB



 Tel: 1-631-559-9269 1-516-512-3133

 Email: info@creative-biomart.com  Fax: 1-631-938-8127

 45-1 Ramsey Road, Shirley, NY 11967, USA