

## Recombinant Renilla Luciferase protein, His-tagged

Cat. No. Luciferase-09R Lot. No. (See product label)

### SPECIFICATION

|                         |  |
|-------------------------|--|
| <b>Product Overview</b> | Recombinant Renilla Luciferase fused with His tag at C-terminal was expressed in E. coli.  |
| <b>Species</b>          | Renilla  |
| <b>Source</b>           | E.coli   |
| <b>Description</b>      | Luciferase played an important role in many functions.   |
| <b>Form</b>             | Lyophilized. Renilla luciferase protein was constituted in a 0.2 µ filtered phosphate-buffered saline (1x PBS) before lyophilized.   |
| <b>Molecular Mass</b>   | 30 kDa   |
| <b>Purity</b>           | >95%   |
| <b>Applications</b>     | ELISA, Western blotting, Dot Blotting, Immunogen, Protein Array, Function Assay, etc.<br>Using the Renilla Luciferase assay kit (Promega), the measured net Relative Light Unit (RLU) was approximately $5 \times 10^{10}$ RLU/g of recombinant enzyme protein.  |
| <b>Storage</b>          | Upon arrival, the lyophilized protein may be stored for 2 weeks at 4 centigrade. For long term storage, it is recommended to store desiccated below -20 centigrade in a manual defrost freezer. Following reconstitution, the protein may be stored for 2 weeks under sterile conditions at -20 centigrade. For long term storage, it is |

 Tel: 1-631-559-9269 1-516-512-3133

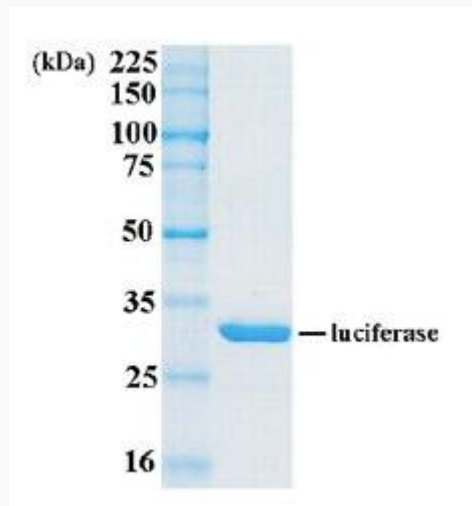
 Email: [info@creative-biomart.com](mailto:info@creative-biomart.com)  Fax: 1-631-938-8127

 45-1 Ramsey Road, Shirley, NY 11967, USA

recommended to make appropriate aliquots and store at -80 centigrade. Avoid repeated freeze-thaw cycles.

### Reconstitution

Briefly spin the vial and bring the contents to the bottom prior to opening. It is recommended to reconstitute at 0.1~ 1 mg/mL with sterile ice-cold deionized water or 1x Phosphate Buffered Saline (PBS). This solution can then be further diluted into other aqueous buffers.



Tel: 1-631-559-9269 1-516-512-3133

Email: [info@creative-biomart.com](mailto:info@creative-biomart.com) Fax: 1-631-938-8127

45-1 Ramsey Road, Shirley, NY 11967, USA