

# Recombinant Protein G-Firefly Luciferase Fusion Protein, His-tagged

Cat. No. Luciferase-11F Lot. No. (See product label)

## SPECIFICATION

### Product Overview

Recombinant Protein G-Firefly Luciferase Fusion Protein, fused with His tag, was expressed in E. coli.

### Species

Firefly

### Source

E. coli

### Description

Antibody Binding Firefly Luciferase is a Protein G-Firefly Luciferase (protein G-Fluc) fusion protein. It consists of protein G and firefly luciferase (Fluc), while the two proteins connect via a short peptide. Protein G tightly binds to IgG molecules from rabbit, human, mouse, goat, sheep, cow, and rat. In addition, protein G conjugates are especially valuable for detecting antibodies that bind poorly to protein A, such as human IgG3, mouse IgG1, and immunoglobulins from rat, sheep, and horse. Firefly luciferase (Fluc) is a light-emitting enzyme to estimate gene expression. It catalyzes the oxidation of firefly luciferin, allowing its detection by a luminometer. As an antibody binding luciferase, protein G-Fluc can avoid harmful labeling of the detecting antibody. Because staining protocols vary with application, the appropriate dilution of Antibody Binding Firefly Luciferase should be determined empirically.

### Form

50 mM sodium phosphate, 100 mM NaCl, 1 mM DTT, pH7.2, 50% glycerol

### Molecular Mass

85.3 kDa

### Purity

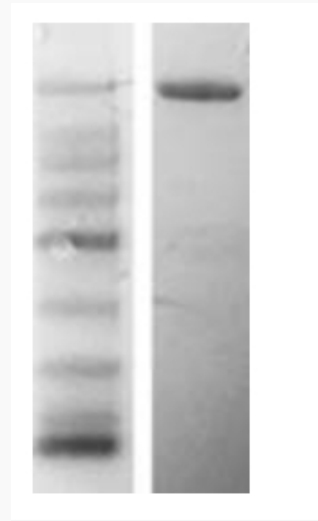
≥ 90% by SDS-PAGE

 Tel: 1-631-559-9269 1-516-512-3133

 Email: [info@creative-biomart.com](mailto:info@creative-biomart.com)  Fax: 1-631-938-8127

 45-1 Ramsey Road, Shirley, NY 11967, USA

<b>Storage</b>	Store at -20°C.
<b>Concentration</b>	0.5 ~ 1.0 mg/ml
<b>Reconstitution</b>	It is recommended that sterile water be added to the vial to prepare a stock solution of 0.2 ug/ul. Centrifuge the vial at 4°C before opening to recover the entire contents.

**SDS-PAGE**

 Tel: 1-631-559-9269 1-516-512-3133

 Email: [info@creative-biomart.com](mailto:info@creative-biomart.com)  Fax: 1-631-938-8127

 45-1 Ramsey Road, Shirley, NY 11967, USA