

# Recombinant Full Length Renilla reniformis Luciferase, His tagged

**Cat. No.** Luciferase-12R    **Lot. No.** (See product label)

## SPECIFICATION

**Product Overview**

Recombinant Renilla luciferase (RLuc) protein has 324 amino acids with a molecular weight of 37.4 kDa. It is the full-length protein (aa 1-311) of Renilla luciferase. It also has a 7 × Histidine tag on the N-terminus. Thus, anti-His tag antibody can detect the protein in Western blotting. In addition, the recombinant RLuc is expressed by our unique SoluPrx technology and is isolated from the soluble fraction as an active protein. Hence, the recombinant Renilla luciferase (RLuc) Protein is an ideal standard for SDS gels, Western Blots, ELISA, protein array, and function assays.

**Species**                      Renilla reniformis

**Source**                        E.coli

**ProteinLength**              1-311 aa

**Description**

Renilla luciferase (RLuc) is an oxidative enzyme from Renilla reniformis. It catalyzes the oxidization of renilla luciferin. The RLuc protein provides an extremely bright flash signal that decays rapidly. The protein also has an emission spectrum in the green region. Moreover, the RLuc protein is more stable in serum than the wild-type luciferase. Since its bioluminescence only requires molecular oxygen, Renilla luciferase has been used in numerous applications as a reporter gene in cell culture, in vivo imaging, and other areas.

**Form**                            Liquid

 Tel: 1-631-559-9269    1-516-512-3133

 Email: [info@creative-biomart.com](mailto:info@creative-biomart.com)     Fax: 1-631-938-8127

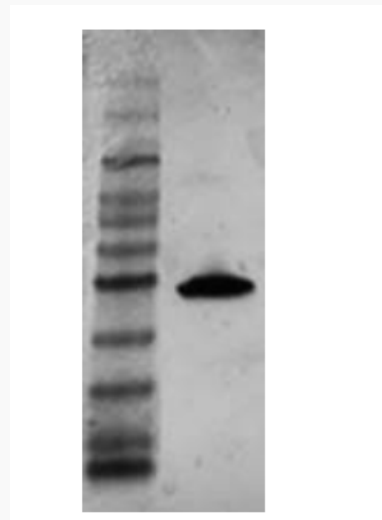
 45-1 Ramsey Road, Shirley, NY 11967, USA


<b>Molecular Mass</b>	37.4 kDa
<b>Purity</b>	≥ 95% by SDS-PAGE
<b>Applications</b>	In vitro research use only
<b>Storage</b>	Short Term Storage: -20 centigrade Long Term Storage: -20 centigrade Avoid freeze/thaw cycle. Aliquot upon arrival.
<b>Storage Buffer</b>	10 mM PBS buffer, 50% glycerol, pH7.2
<b>Concentration</b>	0.5-1.0 mg/mL
<b>Shipping</b>	Cold packs

## GENE INFORMATION


**Synonyms** Luciferase

**WB**



 Tel: 1-631-559-9269 1-516-512-3133

 Email: [info@creative-biomart.com](mailto:info@creative-biomart.com)  Fax: 1-631-938-8127

 45-1 Ramsey Road, Shirley, NY 11967, USA