

Recombinant *Gaussia princeps* Luciferase Protein, Avi-tagged, biotinylated

Cat. No. Luciferase-153 **Lot. No.** (See product label)

SPECIFICATION

Product Overview	Recombinant <i>Gaussia princeps</i> Luciferase fused with Avi tag((GLNDIFEAQKIEWHE) tag at C-terminal was expressed in <i>E. coli</i> . Biotinylated.
Species	<i>Gaussia princeps</i>
Source	<i>E. coli</i>
Description	Luciferase from <i>Gaussia princeps</i> was genetically engineered to be produced in <i>E. coli</i> and to contain the Avitag peptide sequence (GLNDIFEAQKIEWHE, C-terminus). The Avitag™ peptide was biotinylated so one biotin is covalently attached to the lysine within the Avitag peptide.
Form	50mM Tris/Cl pH 7.8, 600mM NaCl, 1mM EDTA, <10%BPER II (Pierce)
Molecular Mass	21,616 Da
Purity	Gluc was purified via affinity chromatography to greater than 98% purity.
Applications	<i>Gaussia princeps</i> luciferase provides all the research possibilities of the interaction between Streptavidin and biotin with the added applications of bioluminescence.
Storage	The enzyme arrives on dry ice (or, in some cases, ice bricks) and should be immediately stored at -80 centigrade. Protein can be quickly thawed and placed at 4

 Tel: 1-631-559-9269 1-516-512-3133

 Email: info@creative-biomart.com  Fax: 1-631-938-8127

 45-1 Ramsey Road, Shirley, NY 11967, USA

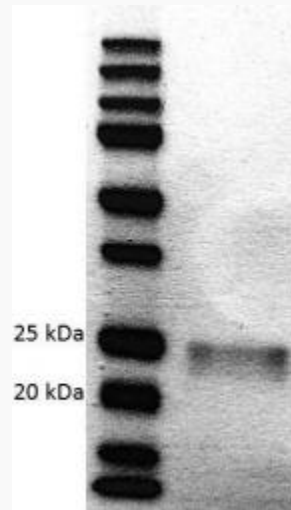
centigrade. GLuc is stable at this temperature for at least 3 months. Avoid repeated freezethaw cycles.

Shipping

Cold packs required. Store at -20 centigrade or below.

Conjugation

Biotin



 Tel: 1-631-559-9269 1-516-512-3133

 Email: info@creative-biomart.com  Fax: 1-631-938-8127

 45-1 Ramsey Road, Shirley, NY 11967, USA