

## Recombinant Rat Lum protein, His-tagged

Cat. No. Lum-5035R    Lot. No. (See product label)

### SPECIFICATION

<b>Product Overview</b>	Recombinant Rat Lum protein(P51886)(19-338aa), fused to N-terminal His tag, was expressed in HEK293.
<b>Species</b>	Rat
<b>Source</b>	HEK293
<b>ProteinLength</b>	19-338aa
<b>Form</b>	If the delivery form is liquid, the default storage buffer is Tris/PBS-based buffer, 5%-50% glycerol. If the delivery form is lyophilized powder, the buffer before lyophilization is Tris/PBS-based buffer, 6% Trehalose, pH 8.0.
<b>Molecular Mass</b>	40.5 kDa
<b>Purity</b>	Greater than 90% as determined by SDS-PAGE.
<b>Storage</b>	Store at -20°C/-80°C upon receipt, aliquoting is necessary for multiple use. Avoid repeated freeze-thaw cycles.
<b>Reconstitution</b>	Please reconstitute protein in deionized sterile water to a concentration of 0.1-1.0 mg/mL. We recommend to add 5-50% of glycerol (final concentration) and aliquot for long-term storage at -20°C/-80°C. Our default final concentration of glycerol is 50%.

 Tel: 1-631-559-9269    1-516-512-3133

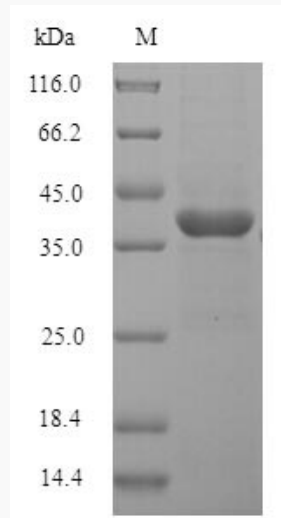
 Email: [info@creative-biomart.com](mailto:info@creative-biomart.com)     Fax: 1-631-938-8127

 45-1 Ramsey Road, Shirley, NY 11967, USA

## GENE INFORMATION

<b>Gene Name</b>	Lum lumican [ <i>Rattus norvegicus</i> ]
<b>Official Symbol</b>	Lum
<b>Synonyms</b>	LUM; lumican; KSPG lumican; keratan sulfate proteoglycan lumican;
<b>Gene ID</b>	81682
<b>mRNA Refseq</b>	NM_031050
<b>Protein Refseq</b>	NP_112312

## SDS-PAGE



Tel: 1-631-559-9269 1-516-512-3133

Email: [info@creative-biomart.com](mailto:info@creative-biomart.com) Fax: 1-631-938-8127

45-1 Ramsey Road, Shirley, NY 11967, USA