

# Adult Mouse Lung Whole Cell Lysate

**Cat. No.** Lung-074MCL    **Lot. No.** (See product label)

## SPECIFICATION

**Product Overview**

Ready-to-use whole cell lysates are derived from cell lines or tissues using highly refined extraction protocols to ensure exceptionally high quality, protein integrity and lot-to-lot reproducibility. All extracts are tested by SDS-PAGE using 4-20% gradient gels and immunoblot analysis using antibodies to key cell signaling components to confirm the presence of both high molecular weight and low molecular weight proteins.

**Species**                      Mouse

**Form**                              Liquid (sterile filtered)

**Specificity**

Tissues were washed exhaustively with PBS to remove blood and other debris. A lysate was prepared by homogenizing the tissue and washing the cells in cold PBS. Washed cells were incubated at 4 centigrade in modified RIPA buffer to lyse the cells. Protein integrity is ensured using a cocktail of protease inhibitors with broad specificity for the inhibition of aspartic, cysteine, and serine proteases as well as aminopeptidases (0.1 mM AEBSF HCl, 0.08 μM Aprotinin, 5 μM Bestatin, 1.5 μM E-64, 2 μM Leupeptin Hemisulfate and 1 μM Pepstatin A). The following phosphatase inhibitors were also added: 1 mM NaF and 1 mM Na<sub>3</sub>VO<sub>4</sub>. Cell debris was removed by centrifugation and membrane filtration. Protein concentration was determined by BCA assay using a commercially available kit. The protein concentration was adjusted to 2 mg/mL and then an equal volume of 2x SDS-PAGE sample buffer was added.

 Tel: 1-631-559-9269    1-516-512-3133

 Email: [info@creative-biomart.com](mailto:info@creative-biomart.com)     Fax: 1-631-938-8127

 45-1 Ramsey Road, Shirley, NY 11967, USA

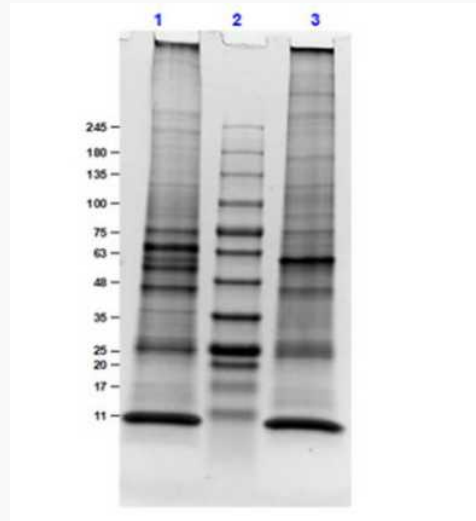
<b>Applications</b>	SDS-PAGE
<b>Cell Line</b>	Primary tissue
<b>Lysate Fractionation</b>	Whole Cell Lysate
<b>Lysate Stimulation</b>	Not Stimulated
<b>Culture Type</b>	Primary Tissue
<b>Induction</b>	None (Control)
<b>Concentration</b>	1.0 mg/mL by BCA assay
<b>Buffer</b>	1× SDS-PAGE Sample Buffer (62.5 mM Tris HCl, 2% SDS, 10% Glycerol and 0.005% bromophenol blue, pH 6.8)
<b>Preservative</b>	None
<b>Stabilizer</b>	10% (v/v) Glycerol
<b>Shipping</b>	Dry Ice
<b>Storage</b>	Store vial at -70 centigrade or COLDER. For extended storage, aliquot contents to minimize freeze/thaw cycles.
<b>Expiration</b>	Expiration date is three months from date of receipt.

 Tel: 1-631-559-9269 1-516-512-3133

 Email: [info@creative-biomart.com](mailto:info@creative-biomart.com)  Fax: 1-631-938-8127

 45-1 Ramsey Road, Shirley, NY 11967, USA

**SDS-PAGE**



SDS-PAGE Results of Mouse Lung, Adult, Whole Cell Lysate.  
Lane 1: Mouse Lung, Adult, Whole Cell Lysate (10 µg) Reduced.  
Lane 2: Opal Prestained Molecular Weight Markers.  
Lane 3: Mouse Lung, Adult, Whole Cell Lysate (10 µg) Reduced.  
Results show wide range of molecular weight bands.

 Tel: 1-631-559-9269 1-516-512-3133

 Email: [info@creative-biomart.com](mailto:info@creative-biomart.com)  Fax: 1-631-938-8127

 45-1 Ramsey Road, Shirley, NY 11967, USA