

Recombinant Mouse lymphatic vessel endothelial hyaluronan receptor 1 Protein, His&Flag tagged

Cat. No. Lyve1-209M Lot. No. (See product label)

SPECIFICATION

Product Overview

Recombinant mouse LYVE1 protein (Q8BHC0) (Ala 24-Thr 234) with both His, Flag tag at the C-terminus was expressed in HEK293.

Species

Mouse

Source

HEK293

ProteinLength

24-234aa

Description

Ligand-specific transporter trafficking between intracellular organelles (TGN) and the plasma membrane. Plays a role in autocrine regulation of cell growth mediated by growth regulators containing cell surface retention sequence binding (CRS). May act as a hyaluronan (HA) transporter, either mediating its uptake for catabolism within lymphatic endothelial cells themselves, or its transport into the lumen of afferent lymphatic vessels for subsequent re-uptake and degradation in lymph nodes. Binds to pericellular hyaluronan matrices deposited on the surface of leukocytes and facilitates cell adhesion and migration through lymphatic endothelium.

Tag

C-His&Flag

Molecular Mass

25.3 kDa

Endotoxin

Less than 1.0 EU/μg by the LAL method.

 Tel: 1-631-559-9269 1-516-512-3133

 Email: info@creative-biomart.com  Fax: 1-631-938-8127

 45-1 Ramsey Road, Shirley, NY 11967, USA

Purity	>95% as determined by SDS-PAGE.
Storage	Please avoid repeated freeze-thaw cycles. Samples are stable for up to twelve months from date of receipt at -20 to -80 centigrade. It is recommended that aliquot the reconstituted solution to minimize freeze-thaw cycles.
Storage Buffer	Lyophilized from a 0.2 µm filtered solution of PBS, pH7.4, 5% Trehalose, 5% mannitol.
Reconstitution	Reconstitute at 250 µg/mL in sterile water.

GENE INFORMATION

Gene Name	Lyve1 lymphatic vessel endothelial hyaluronan receptor 1 [Mus musculus (house mouse)]
Official Symbol	Lyve1
Synonyms	LYVE1; lymphatic vessel endothelial hyaluronan receptor 1; lymphatic vessel endothelial hyaluronic acid receptor 1; extra cellular link domain-containing 1; lymphatic vessel endothelial HA receptor-1; lymphatic vessel endothelial HA receptor-1; extracellular link domain-containing protein 1; cell surface retention sequence binding protein-1; cell surface retention sequence-binding protein 1; Xlkd1; Lyve-1; Crsbp-1; 1200012G08Rik;
Gene ID	114332
mRNA Refseq	NM_053247
Protein Refseq	NP_444477

 Tel: 1-631-559-9269 1-516-512-3133

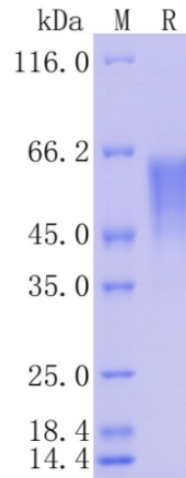
 Email: info@creative-biomart.com  Fax: 1-631-938-8127

 45-1 Ramsey Road, Shirley, NY 11967, USA

UniProt ID

Q8BHC0

Protein on SDS-PAGE under reducing (R) condition.



 Tel: 1-631-559-9269 1-516-512-3133

 Email: info@creative-biomart.com  Fax: 1-631-938-8127

 45-1 Ramsey Road, Shirley, NY 11967, USA