

# Recombinant SARS-CoV-2 Spike S1 (Q14-A684) Protein, Fc-tagged

Cat. No. M-094S Lot. No. (See product label)

## SPECIFICATION

### Product Overview

Recombinant protein of severe acute respiratory syndrome coronavirus 2 Spike S1 (Q14-A684), with a rabbit IgG Fc tag was expressed in human cells.

### Species

SARS-CoV-2

### Source

Human Cells

### ProteinLength

14-684 a.a.

### Description

The spike (S) glycoprotein of coronaviruses is known to be essential in the binding of the virus to the host cell at the advent of the infection process. Most notable is severe acute respiratory syndrome (SARS). The severe acute respiratory syndrome-coronavirus (SARS-CoV) spike (S) glycoprotein alone can mediate the membrane fusion required for virus entry and cell fusion. It is also a major immunogen and a target for entry inhibitors. The SARS-CoV-2 spike (S) protein is composed of two subunits; the S1 subunit contains a receptor-binding domain that engages with the host cell receptor angiotensin-converting enzyme 2 and the S2 subunit mediates fusion between the viral and host cell membranes. The S RBD protein plays key parts in the induction of neutralizing-antibody and T-cell responses, as well as protective immunity, during infection with SARS-CoV-2 (2019-nCoV) as in recent COVID-19 outbreak.

### Molecular Mass

101 kDa

 Tel: 1-631-559-9269 1-516-512-3133

 Email: [info@creative-biomart.com](mailto:info@creative-biomart.com)  Fax: 1-631-938-8127

 45-1 Ramsey Road, Shirley, NY 11967, USA

|                       |   |
|-----------------------|---|
| <b>Endotoxin</b>      | Endotoxin level is < 0.1 ng/μg of protein (< 1 EU /μg)  |
| <b>Purity</b>         | >90% by SDS-PAGE gel and Coomassie Blue staining  |
| <b>Applications</b>   | Antigens, Western, ELISA and other in vitro binding or in vivo functional assays, and protein-protein interaction studies; For research & development use only! |
| <b>Storage Buffer</b> | Purified protein formulated in a sterile solution of PBS buffer, pH7.2, without any preservatives   |

## GENE INFORMATION

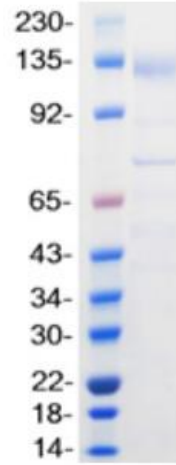
|                        |   |
|------------------------|---|
| <b>Gene Name</b>       | <a href="#">M membrane glycoprotein [ Severe acute respiratory syndrome coronavirus 2 ]</a> |
| <b>Official Symbol</b> | <a href="#">M</a>   |
| <b>Synonyms</b>        | M; membrane glycoprotein; membrane glycoprotein; ORF5; structural protein                   |
| <b>Gene ID</b>         | <a href="#">43740571</a>  |
| <b>mRNA Refseq</b>     | <a href="#">MN908947</a>  |
| <b>Protein Refseq</b>  | <a href="#">YP_009724390</a>  |

 Tel: 1-631-559-9269 1-516-512-3133

 Email: [info@creative-biomart.com](mailto:info@creative-biomart.com)  Fax: 1-631-938-8127

 45-1 Ramsey Road, Shirley, NY 11967, USA

**SDS-PAGE**



 Tel: 1-631-559-9269 1-516-512-3133

 Email: [info@creative-biomart.com](mailto:info@creative-biomart.com)  Fax: 1-631-938-8127

 45-1 Ramsey Road, Shirley, NY 11967, USA